

Lenovo C27q-30 Monitor

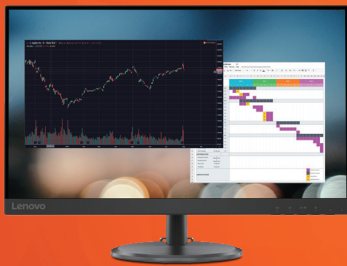
Gear up to do business better.

Get a bigger view of your working world.

Equip yourself with essential hardware to boost your productivity. Lenovo C27q-30 Monitor's 27-inch Vertical Alignment panel displays small print in documents and fine details in plans at a QHD resolution. And, to remove distractions while editing long reports, it sits inside a NearEdgeless frame that makes the picture seem to float and gives a modern, clean aspect to your workspace. You'll never be disrupted by image tearing and stuttering because C27q-30 Monitor comes with AMD FreeSync™* on board. And with a response time of just 4ms in extreme mode, even fast-paced action never lags. Moreover, it comes with TÜV Rheinland Low Blue Light and Eye Comfort certified technologies for maximized eye protection and display performance. Together, this is a monitor that is excellent to use, day or night. Plugging into a PC or laptop is effortless as C27q-30 connects easily by HDMI or DP port. Sound adds an essential dimension for viewing video or taking calls through its Audio port, letting you listen through headphones or a speaker system. No matter the task, it can be done clutter-free as all those cables are handled neatly out of the way through an integrated cable management system in the stand that tilts the screen to always be at the most comfortable viewing angle. And for anyone wanting to clear their desk completely, the Lenovo C27q-30 Monitor can be easily mounted on the wall with its 100 mm x 100 mm VESA wall mount-ready back panel.

Lenovo

KEY FEATURES OF LENOVO C27q-30 MONITOR



Engineered for your performance

A bigger canvas for productivity with this 27-inch Vertical Alignment display designed to deliver a wider viewing angle up to 178°. It shows off every fine detail in 2560 x 1440 QHD resolution so that long-copy documents are easier to read and edit. Spreadsheets are easier to navigate. Small details in designs show up in fine resolution. Even game graphics display the way they were meant to be seen. And all within a 3-sided NearEdgeless frame that maximizes screen size and lets the image "float".



Stutter-free, flutter-free, flicker-free

Lenovo C27q-30 Monitor makes the best of your working environment with a viewing experience that helps productivity and performance, and maximizes comfort. AMD FreeSync™* technology eliminates disruptive image tearing when it's time to take a break for entertainment. TÜV Rheinland Low Blue Light and Eye Comfort certified technologies let you work for extended periods, guarding your vision against harmful blue light and eyestrain while taking screen flicker right out of the picture.



Every essential connection built-in

Show complex setups between equipment the exit. The Lenovo C27q-30 Monitor plugs and plays with PCs, laptops, and phones through HDMI 1.4 and DP 1.4 ports. Audio Out delivers quality sound output to headphones or speakers to make video calls, online training videos come alive. Optimum viewing angle is assured through the tilt stand that also tides cables away. And for an extra convenient and comfort option, the monitor has 100 mm x 100 mm VESA mounting capability.

* AMD FreeSync™ is enabled for AMD Radeon™ Series graphics cards.

Lenovo C27q-30 Monitor

DISPLAY

Panel Size

27-inch

Screen Dimensions (W x H, mm)

609.0 mm x 341.8 mm

Panel Type

3-side NearEdgeless, VA

Active Area

596.7 mm x 335.6 mm

Backlight

WLED

Aspect Ratio

16:9

Resolution

2560 x 1440

Pixel Pitch

0.233 mm x 0.233 mm

Dot/Pixel Per Inch (DPI/PPI)

109

Viewing Angle (H x V @ CR 10:1)

178° / 178°

Response Time

4ms (Extreme Mode),

6ms (Normal Mode), 14ms (Off Mode)

Refresh Rate

75Hz

Brightness (Typical)

250 cd/m²

Contrast Ratio (Typical)

3000:1

Dynamic Contrast Ratio (Typical)

3M:1

Color Gamut (Coverage Ratio)

72% NTSC (CIE 1931)

Color Support (Typical)

16.7 Million

Color Depth

8-bit

Anti-Glare

Yes

CONNECTIVITY

Video Signal

1 x HDMI 1.4

1 x DP 1.4

Audio Signal

1 x Audio Out (3.5 mm)

SPECIAL FEATURES

Sync Technology

AMD FreeSync™¹

POWER

Power Consumption (Typ. / Max.)

28W / 35W

Power Consumption Sleep/Off Mode

< 0.5W

Power Consumption Switch-off Mode

< 0.3W

ENERGY STAR Power Consumption (P_{on} / E_{TEC})

27W / 58kWh

Power Supply

Internal

Voltage Required

AC 100 to 240 V (50–60Hz)

MECHANICAL

Tilt Angle (Front / Back)

-5° / 22°

VESA Mount Capability

Yes (100 x 100 mm)

ThinkCentre M Series Tiny Support

Yes, by Tiny VESA Mount II (PN: 4XFON03161)²

ThinkCentre M Series Nano Support

Yes, by Nano VESA Mount (PN: 4XF0V81630)²

Kensington Lock Slot

Yes

Cable Management

Yes

Bezel Color

OTS Black

Bezel Width (Side)

1.8 mm

Bezel Width (Top / Bottom)

1.8 / 28.1 mm

DIMENSION

Size Packed

(D x H x W) (mm/inch)

179.0 x 453.0 x 717.0 mm

7.05 x 17.83 x 28.23 inches

Size Unpacked w/ Stand (Highest Position)

(D x H x W) (mm/inch)

231.2 x 444.4 x 614.1 mm

9.10 x 17.50 x 24.18 inches

Size Unpacked w/o Stand (Head Only)

(D x H x W) (mm/inch)

43.7 x 374.5 x 614.1 mm

1.72 x 14.74 x 24.18 inches

Weight Packed (kg / lbs.)

6.6 kg / 14.6 lbs.

Weight Unpacked (kg / lbs.)

4.7 kg / 10.4 lbs.

Weight (Monitor Head Only) (kg / lbs.)

4.1 kg / 9.1 lbs.

WHAT'S IN THE BOX

Monitor with Stand

Yes

Power Cable (Cable Length)

1 x Power Cable (1.8 m)

HDMI Cable (Cable Length)

1 x HDMI Cable (1.8 m)

Quick Setup Guide

Yes

Warranty Booklet

Yes

CERTIFICATION

CCC

Yes

Volatile Organic Compound Certification

Yes

RoHS (2011/65/EU)

Yes

Windows Certification

Windows 10, Windows 11

China Energy Efficiency Standard Grade 2

TÜV Rheinland Eye Comfort

Yes

TÜV Rheinland Low Blue Light

Yes



Lenovo

¹ AMD FreeSync™ is enabled for AMD Radeon™ Series graphics cards. | ² Sold separately.

* The monitor supports Windows 11.

© 2022 Lenovo. All rights reserved. These products are available while supplies last. Prices shown are subject to change without notice. For any questions concerning price, please contact your Lenovo Account Executive. Lenovo is not responsible for photographic or typographic errors. Warranty: For a copy of applicable warranties, write to: Warranty Information, 500 Park Offices Drive, RTP, NC 27709, U.S.A., Attn: Dept. ZPYA/B600. Lenovo makes no representation or warranty regarding third-party products or services. Trademarks: Lenovo, the Lenovo logo, Rescue and Recovery, ThinkPad, ThinkCentre, ThinkStation, ThinkVantage, ThinkVision, and ThinkColour are trademarks or registered trademarks of Lenovo. Microsoft, Windows, and Vista are registered trademarks of Microsoft Corporation. Intel, the Intel logo, Intel Inside, Intel Core, and Core Inside are trademarks of Intel Corporation in the U.S. and/or other countries. Other company, product, and service names may be trademarks or service marks of others.

Specifications may vary depending upon region.