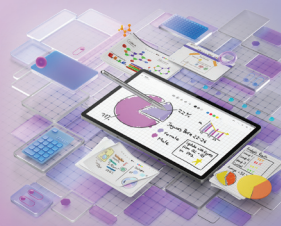


Lenovo Idea Tab Pro | Lenovo Idea Tab Pro Matte Edition

Smarter technology for all

Lenovo

# Level Up Elevate your studies with next-gen solution.



WWW.LENOVO.COM

# Lenovo Idea Tab Pro | Lenovo Idea Tab Pro Matte Edition

Smarter technology for all

Lenovo

## Specifications

### Design

#### Dimension



#### Weight

620 g (1.37 lbs)

#### Operating System at Launch

Launched with Android™ 14.  
(Expect Android™ 15 & 16 upgrades and 4 years security updates.)

### Performance

#### Processor

MediaTek Dimensity 8300  
(Octa-Core; 1 x A715 @ 3.35 GHz +  
3 x A715 @ 3.2 GHz + 4 x A510 @ 2.2 GHz.  
ARM G615 MC5 1400 MHz)

#### Audio

4 x JBL® Speakers Tuned by Dolby Atmos®;  
Dual Microphones



#### Memory (LPDDR5X + UFS 3.1)

RAM + ROM : 8 GB + 128 GB / 8 GB + 256 GB  
Card Slot : MicroSD, exFAT Up to 1 TB

#### Battery<sup>2</sup>

Type : Li-ion Battery  
Capacity : 10200 mAh (Typical),  
Support of 45W Quick Charge  
Streaming : Up to 11 Hours of YouTube Streaming



<sup>1</sup> Depending on many factors such as the processing capability of peripheral devices, file attributes, and other factors related to system configuration and operating environments, the actual transfer rate using the various USB connectors on this device will vary and is typically slower than the data rates as defined by the respective USB specifications: 5 Gbit/s for USB 3.2 Gen 1; 10 Gbit/s for USB 3.2 Gen 2 & 20 Gbit/s for USB 3.2 Gen2x2. <sup>1</sup> All battery life claims are approximate and based on internal testing under optimal laboratory and network conditions. Actual battery performance will vary and depend on numerous factors including product configuration and usage, software, operating conditions, wireless functionality, power management settings, screen brightness and other factors. The maximum capacity of the battery will naturally decrease with time and usage. <sup>2</sup> Actual application availability varies by country.

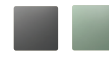
#### Display

Size : 12.7"  
Screen : LCD  
Screen (Matte Edition) : Paper-like Anti-glare Display  
Resolution : 2944 x 1840  
PPI : 273  
Aspect Ratio : 16:10  
Refresh Rate : 144 Hz  
Brightness : Up to 400 nits  
Screen-to-Body Ratio : ≥87%



#### Colors

Luna Grey | Seafoam Green



#### Card Slots

Type : Single Card Slot  
Slots : MicroSD Card



### Connectivity

#### Wireless Connectivity

WLAN : 802.11 a/b/g/n/ac/ax,  
Dual Band  
WiFi 2.4 GHz and 5 GHz,  
WiFi 6E Certified



Bluetooth® : 5.3  
GPS : Yes  
GLONASS : Yes  
Galileo : Yes

### Accessories



#### Integrated Camera

Front  
8MP FF (f/2.0)  
Rear  
13MP AF (f/2.2)



#### Sensors

Accelerometer Sensor, Hall Sensor,  
Gyroscope, RGB Sensor, Coulomb Counter,  
Fingerprint Sensor on the Power Key

#### Login Security

Fingerprint : Yes Face Unlock : Yes

#### Buttons and Ports

USB-C™ 3.2 Gen 1<sup>1</sup>  
MicroSD Card Slot  
3-point Pogo Pin for Keyboard Connection

### Software

#### Preloaded Software<sup>3</sup>

- Google Kids Space
- Google Gemini App
- Circle to Search with Google
- Entertainment Space
- Play
- Files
- Google TV
- YouTube Kids
- Google Chrome
- Gmail
- Maps
- Drive
- Duo
- Photos
- Message
- Podcasts
- Docs
- Sheets
- Lenovo Smart Connect
- WPS
- Nebo
- MyScript Calculator
- Music
- Recorder
- Lenovo Vantage

### Certifications

#### Idea Tab Pro



#### Idea Tab Pro Matte Edition



### What's in the Box\*

- Lenovo Idea Tab Pro /  
Lenovo Idea Tab Pro Matte Edition
- MicroSD Tray Pin
- USB Type-C™ 2.0 Charging Cable
- Quick Start Guide & Safety,  
Warranty

\* Actual in-box items may vary depending on markets, resellers, configurations, and more.

### Recommended Lenovo Services\*

**Lenovo Accidental Damage Protection One**  
Avoid the hassles of unexpected damage & repair costs. With coverage for drops, spills, electric surges, and broken LCD screens, accidental damage protection makes it easy to repair your Tablets, permitting a single repair during the coverage period.

**Lenovo Premium Care**  
Premium Care is a hassle-free solution for all your technical support needs. Upgrade your Lenovo Tablet's standard warranty to our

front-of-the-queue customer support service and get 24/7 real-person support via phone, chat, or email from experts who provide solutions on your first contact.

**Lenovo Premium Care Plus**  
Enjoy extra care, comfort, and peace-of-mind with Lenovo Premium Care Plus – a comprehensive support solution with personalized hardware and software support from experts and accidental damage coverage, with you as our priority 24/7.

\* Optional premium services and accessories may be sold separately. Availability varies depending on markets, resellers, configurations and more.



WWW.LENOVO.COM



Lenovo reserves the right to alter product offerings and specifications at any time, without notice. Lenovo makes every effort to ensure accuracy of all information but is not liable or responsible for any editorial, photographic or typographic errors. All images are for illustration purposes only. For full Lenovo product, service and warranty specifications visit [www.lenovo.com](http://www.lenovo.com). Lenovo makes no representations or warranties regarding third party products or services. **Trademarks:** The following are trademarks or registered trademarks of Lenovo: Lenovo, the Lenovo logo, Yoga, Google and Android are trademarks of Google LLC. Ultrabook, Celeron, Celeron Inside, Core Inside, Intel, Intel Logo, Intel Atom, Intel Atom Inside, Intel Core, Intel Inside, Intel Inside Logo, Intel vPro, Itanium, Itanium Inside, Pentium, Pentium Inside, vPro Inside, Xeon, Xeon Phi and Xeon Inside are trademarks of Intel Corporation in the U.S. and/or other countries. WiFi 6 is a trademark of WiFi Alliance. HDR10+ is a trademark of HDR10+ Technologies, LLC. MyScript and Nebo are trademarks of the company MyScript, registered in France, the United States of America and other countries. Other company, product and service names may be trademarks or service marks of others. Battery life (and recharge times) will vary based on many factors including system settings and usage. ©2025 Lenovo. All rights reserved.