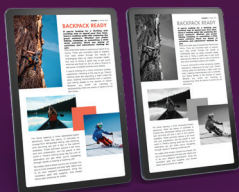


Lenovo
Tab M10 5G

Smarter
technology
for all

Lenovo

Fun time, anytime with 5G.



WWW.LENOVO.COM

Lenovo Tab M10 5G

Smarter
technology
for all

Lenovo

Specifications

Design

Dimension



Weight (for tablet only)

~490 g (1.08 lbs)

Operating System at Launch

Android™ 13

Performance

Processor

Qualcomm® Snapdragon® 695; Octa-Core, Kryo 660; 2 x Gold 2.2 GHz + 6 x Silver 1.8 GHz

Audio

Dual Speakers Optimized with Dolby Atmos®, Single Microphone



Memory

RAM + ROM : 4 GB + 128 GB / 6 GB + 128 GB (LPDDR4x uMCP) With Expandable SD Card Support exFAT up to 1 TB

Card Slot : One Card Slot; TF Card Slot

Battery (for ROW SKU)¹

Type : Li-ion Polymer
Capacity : 7700 mAh (Typical)
Video Playback : Up to 12 Hours; Up to 9 Hours (5G)
Web Browsing : Up to 11 Hours; Up to 9 Hours (5G)
Music Playback : Up to 55 Hours



Display

Size : 10.61"
Screen : LCD
Resolution : 1200 x 2000
PPI : 220
Refresh Rate : 90 Hz
Color Gamut : 72% NTSC
Brightness : Up to 400 nits (Typical)
Screen-to-Display Ratio : 83.6%



Color

Abbyss Blue



Card Slots

Type : One Card Slot
Slots : Nano + TF



Connectivity

Wireless Connectivity

Network : 5G Sub6, LTE, UMTS, GSM
WLAN : WiFi 802.11 a/b/g/n/ac with ax features 2.4 GHz + 5 GHz
Bluetooth® : 5.1
WiFi Direct : Yes
WiFi Display : Yes
Beidou/Galileo/ : Yes
GLONASS
GPS/AGPS : Yes



Bands Supported

GSM : B2/3/5/8
UMTS : B1/2/4/5/6/8/19
FDD-LTE : B1/2/3/4/5/7/8/12/13/18/19/20/25/26/28(a+b)/32/66
TDD-LTE : B34/38/39/40/41/42
FRI NR : n1/3/5/7/8/20/28/38/40/41/66/71/77/78/79

Integrated Camera

Rear
13MP AF
Front
8MP FF



Sensors

Accelerometer (G) Sensor, Ambient L-Sensor, Gyroscope, Hall Sensor, Vibrator, Sar Sensor

Login Security

Fingerprint : N/A Face Unlock : Yes

Buttons and Ports

USB Type-C™ 2.0
3.5 mm Audio Jack, Power Key
Volume Up and Down Keys

Software

Preloaded Software²

- Google
- Google Kids Space
- Entertainment Space³
- Chrome
- Gmail
- Maps
- YouTube
- PlayStore
- Drive
- YT Music
- Google Meet
- Photos
- Phone
- Message
- Contacts
- Gboard
- Assistant
- Calendar
- Files
- Google TV
- Play Games
- Play Book
- Youtube Kids
- Recorder
- Camera
- Lenovo Vantage
- Nebo

¹ All battery life claims are approximate and based on internal testing under optimal laboratory and network conditions. Actual battery performance will vary and depend on numerous factors including product configuration and usage, software, operating conditions, wireless functionality, power management settings, screen brightness and other factors. The maximum capacity of the battery will naturally decrease with time and usage.

² Actual application availability varies by country.

³ Books and video content not available in all regions. Video content subject to availability of YouTube Kids app. Books content requires the Play Books app. Availability of apps, books, and video content may change without notice. Google Assistant not available in Google Kids Space. Google Kids Space requires a Google Account for your child. Parental controls require the Family Link app on a supported Android, Chromebook, or iOS device.

What's in the Box¹

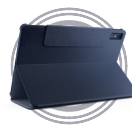
- 1 x Lenovo Tab M10 5G
- 1 x USB Type-C™ 2.0 Charging Cable
- 1 x 10V/2A Charging Adapter²
- 1 x Quick Start Guide & Safety, Warranty
- 1 x SIM Tray Pin

¹ Actual in-box items vary by different sales package.

² In-box charger availability may vary with country.



Accessories



Lenovo Tab M10 5G Folio Case



Lenovo Tab Pen Plus

Recommended Lenovo Services

Lenovo Accidental Damage Protection One
Avoid the hassles of unexpected damage & repair costs. With coverage for drops, spills, electric surges, and broken LCD screens, accidental damage protection makes it easy to repair your Tablets, permitting a single repair during the coverage period.

Lenovo Premium Care

Premium Care is a hassle-free solution for all your technical support needs. Upgrade your Lenovo Tablet's standard warranty to our front-of-the-queue

customer support service and get 24/7 real-person support via phone, chat, or email from experts who provide solutions on your first contact.

Lenovo Premium Care Plus

Enjoy extra care, comfort, and peace-of-mind with Lenovo Premium Care Plus – a comprehensive support solution with personalized hardware and software support from experts and accidental damage coverage, with you as our priority 24/7.

Want More?

Lenovo Tab P11



WWW.LENOVO.COM



Lenovo reserves the right to alter product offerings and specifications at any time, without notice. Lenovo makes every effort to ensure accuracy of all information but is not liable or responsible for any editorial, photographic or typographic errors. All images are for illustration purposes only. For full Lenovo product, service and warranty specifications visit www.lenovo.com. Lenovo makes no representations or warranties regarding third party products or services. **Trademarks:** The following are trademarks or registered trademarks of Lenovo: Lenovo, the Lenovo logo, Yoga. Google and Android are trademarks of Google LLC. Ultrabook, Celeron, Celeron Inside, Core Inside, Intel, Intel Logo, Intel Atom, Intel Atom Inside, Intel Core, Intel Inside, Intel Core Inside, Intel Inside Logo, Intel vPro, Itanium, Itanium Inside, Pentium, Pentium Inside, vPro Inside, Xeon, Xeon Phi and Xeon Inside are trademarks of Intel Corporation in the U.S. and/or other countries. WiFi 6 is a trademark of WiFi Alliance. HDR10+ is a trademark of HDR10+ Technologies, LLC. MyScript and Nebo are trademarks of the company MyScript, registered in France, the United States of America and other countries. Other company, product and service names may be trademarks or service marks of others. Battery life (and recharge times) will vary based on many factors including system settings and usage. ©2023 Lenovo. All rights reserved.