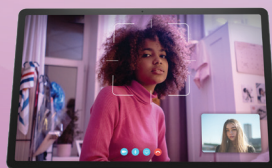
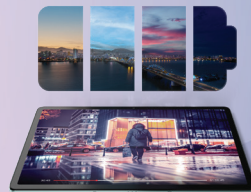


Lenovo
Tab P12 with Matte Display

Smarter
technology
for all

Lenovo

Fuel your ideas with an
expansive screen.



WWW.LENOVO.COM

Lenovo Tab P12 with Matte Display

Smarter
technology
for all

Lenovo

Specifications

Design

Dimension



Weight (for tablet only)

-615 g (1.36 lbs)

Operating System at Launch

Launched with Android™ 13 (Lenovo ZUI 15) (Expect Android™ 14 and Android™ 15 OS upgrades and four years of security updates until 2027)

Performance

Processor

MediaTek Dimensity 7050
Octa-Core, 2 x A78 2.6 GHz + 6 x A55 2.0 GHz

Audio

Quad JBL® Speakers (sound by JBL®) and Dolby Atmos®; Dual Microphones



Memory

RAM + ROM : 8 GB + 128 GB (with Expandable SD Card Support: (exFAT) Up to 1 TB)
Card Slot : Single Card Slot, TF Card Slot

Battery (for ROW SKU)

Type : Li-ion Polymer
Capacity : 10200 mAh (Typical), Support of 30W Quick Charge



Video Playback : Up to 9 Hours

Web Browsing : Up to 9 Hours

Display

Size : 12.7"
Screen : Paper-like Anti-glare LCD
Resolution : 3K (2944 x 1840)
PPI : 273
Aspect Ratio : 16:10
Refresh Rate : 60 Hz
Color Gamut : 96%
Color Depth : 1 Billion (8-bit + 2-bit)
Contrast Ratio : 1500:1
Screen-to-Display Ratio : 87%



Color

Sage



Card Slots

Type : Single Card Slot
Slots : MicroSD Card



Connectivity

Wireless Connectivity

WLAN : 802.11 a/b/g/n/ac/ax, Dual Band
WiFi 2.4 GHz and 5 GHz,
WiFi 6 Certified



Bluetooth® : 5.1

WiFi Direct : Yes

WiFi Display : Yes

GPS/

GLONASS : Yes

A-GPS : N/A

Certifications



Integrated Camera

Front
13MP FF with RGB Sensor and Ultra-wide FOV
Rear
8MP AF (f/2.2)



Sensors

Accelerometer (G) Sensor, RGB Sensor, Hall-Sensor, Fingerprint Sensor, E-Compass, Gyroscope

Login Security

Fingerprint : Yes Face Unlock : Yes

Buttons and Ports

USB Type-C™ 2.0 Charging/Audio
MicroSD Slot
3-pin Pogo Pin for Keyboard Connection

Software

Preloaded Software²

- Google Kids Space
- Lens
- Entertainment Space
- Play
- Files
- Google TV
- YouTube
- YouTube Kids
- Google
- Chrome
- Gmail
- Maps
- Drive
- Duo
- Photos
- Message
- Google One
- Podcasts
- Docs
- Sheets
- Lenovo Freestyle
- WPS
- Nebo
- MyScript Calculator
- Music
- Recorder
- Lenovo Vantage

What's in the Box¹

- Lenovo Tab P12 with Matte Display
- USB Type-C™ 2.0 Charging Cable
- 20W Charging Adapter (10V/2A)²
- MicroSD Tray Pin
- Quick Start Guide & Safety, Warranty
- SIM Tray Pin

¹ Actual in-box items may vary depending on markets, resellers, configurations, and more.

² In-box charger availability may vary with country. Visit <https://support.lenovo.com> for more information about compatible charging adapters.

Accessories



Lenovo Tab Pen Plus



Lenovo Tab P12 Keyboard Pack



Lenovo Tab P12 Folio Case

Recommended Lenovo Services*

Lenovo Accidental Damage Protection One

Avoid the hassles of unexpected damage & repair costs. With coverage for drops, spills, electric surges, and broken LCD screens, accidental damage protection makes it easy to repair your Tablets, permitting a single repair during the coverage period.

Lenovo Premium Care

Premium Care is a hassle-free solution for all your technical support needs. Upgrade your Lenovo Tablet's standard warranty to our

front-of-the-queue customer support service and get 24/7 real-person support via phone, chat, or email from experts who provide solutions on your first contact.

Lenovo Premium Care Plus

Enjoy extra care, comfort, and peace-of-mind with Lenovo Premium Care Plus - a comprehensive support solution with personalized hardware and software support from experts and accidental damage coverage, with you as our priority 24/7.

* Optional premium services and accessories may be sold separately. Availability varies depending on markets, resellers, configurations and more.



WWW.LENOVO.COM



Lenovo reserves the right to alter product offerings and specifications at any time, without notice. Lenovo makes every effort to ensure accuracy of all information but is not liable or responsible for any editorial, photographic or typographic errors. All images are for illustration purposes only. For full Lenovo product, service and warranty specifications visit www.lenovo.com. Lenovo makes no representations or warranties regarding third party products or services. **Trademarks:** The following are trademarks or registered trademarks of Lenovo: Lenovo, the Lenovo logo, Yoga. Google and Android are trademarks of Google LLC. Ultrabook, Celeron, Celeron Inside, Core Inside, Intel, Intel Logo, Intel Atom, Intel Atom Inside, Intel Core, Intel Inside, Intel Core Inside, Intel Inside Logo, Intel vPro, Itanium, Itanium Inside, Pentium, Pentium Inside, vPro Inside, Xeon, Xeon Phi and Xeon Inside are trademarks of Intel Corporation in the U.S. and/or other countries. WiFi 6 is a trademark of WiFi Alliance. HDR10+ is a trademark of HDR10+ Technologies, LLC. MyScript and Nebo are trademarks of the company MyScript, registered in France, the United States of America and other countries. Other company, product and service names may be trademarks or service marks of others. Battery life (and recharge times) will vary based on many factors including system settings and usage. ©2024 Lenovo. All rights reserved.