

LEGION 5i Pro (16")

CALIBRATED TO CONQUER.

Decimate the competition, leave no one standing. Running 12th Generation Intel® Core™ processors, up to NVIDIA® GeForce RTX™ 3050 Ti (80W) graphics, and the Legion AI Engine designed to auto-detect and auto-optimize your in-game performance, vie for victory and vanquish all foes with the Legion 5i Pro. In stunning and precise WQHD+ (2560 x 1600) with an up-to 240 Hz variable refresh rate display at a massive 16" 16:10 aspect ratio, it's bigger, it's better, and it's born to conquer. And with Legion Coldfront v4.0 thermal technology and a sleek choice between Storm Grey and Glacier White, the only decision you'll have left is what color you want your trophy.

WHY YOU SHOULD BUY THE LENOVO LEGION 5i PRO (16")



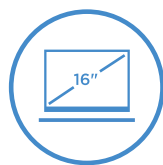
Desktop Caliber Gaming Happens with Intel®

Take a revolutionary leap into real-world hybrid performance with 12th Generation Intel® Core™ processors, WiFi 6E and DDR5 memory support.



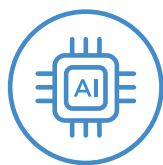
Full Powered RTX. It's On.

Experience the most realistic gaming experiences with NVIDIA® GeForce RTX™ 30 Series graphics delivering ray tracing and advanced DLSS to your favorite games.



Serious Frame Advantage

Blaze past the competition with the world's first 16" WQHD+ (2560 x 1600) up to 240 Hz adaptive refresh rate display with a 16:10 aspect ratio.



Max AI Tuned Performance

The Legion AI Engine leverages AI to custom calibrate your system for the most popular AAA titles, while Legion Coldfront 4.0 deploys advanced thermal technologies for maximum frame rates with zero throttling.



WWW.LENOVO.COM



Lenovo

LEGION 5i Pro (16")

SPECIFICATIONS

Legion 5P 16IAH7*

PERFORMANCE

Processor

12th Generation Intel® Core™ i7-12700H
12th Generation Intel® Core™ i5-12500H

Operating System

Windows 11 Pro
Windows 11 Home

Graphics

NVIDIA® GeForce RTX™ 3050 Ti; 4 GB GDDR6
(95W TGP, Listed Boost Clock: 1695 MHz)¹

Memory

4800 MHz DDR5
16 GB (2 x 8 GB)

Storage

PCIe SSD (Gen 4)
512 GB / 1 TB

Battery²

80 WHr
> 5 Hours (Target)³
Super Rapid Charge (30 min charge 80%)

Power Adapter

230W Slim Adapter



DESIGN

Display

- 16" WQHD+ (2560 x 1600) IPS; 16:10
(165 Hz / 3 ms Response Time⁴ / 100% sRGB / 500 nits); Up to VESA DisplayHDR™ 400
Certified / Dolby Vision® Support / NVIDIA® G-SYNC™ Support / TUV Rheinland Certified
- 16" WQHD+ (2560 x 1600) IPS; 16:10
(165-240 Hz VRR / 3 ms Response Time⁴ / 100% sRGB / 500 nits); Up to VESA
DisplayHDR™ 400 Certified / Dolby Vision®
Support / NVIDIA® G-SYNC™ Support / TUV
Rheinland Certified (TBD)
- 16" FHD+ (1920 x 1200) IPS; 16:10
(165 Hz / 3 ms Response Time⁴ / 100% sRGB / 300 nits) / Dolby Vision® Support /
NVIDIA® G-SYNC™ Support /
TUV Rheinland Certified

Dimensions (W x D x H)

(mm) : 359.9 x 264.4 x 19.9
(inches) : 14.17" x 10.4" x 0.78"

Weight

Up to 2.49 kg (5.49 lbs) (assessment data)

Backlit Keyboard

1.5 mm / Keycap Color / Storm Grey or White
(Glacier White) / White Backlight (Storm Grey) /
Blue Backlight (Glacier White) / 4-Zone RGB⁵ /
0.3 mm Ditch / 100% Anti-Ghosting /
Swappable Keycap

Colors

Storm Grey
Glacier White

CONNECTIVITY

Webcam

Built-in HD Webcam (720p) with E-Shutter

WLAN

2x2 Intel® WiFi 6E (802.11 ax)
2x2 Intel® WiFi 6 (802.11 ax)⁵
2x2 Intel® WiFi 5 (802.11 ac)⁵

Bluetooth®

Starting from Bluetooth® 5.1

Audio

2 x 2W Stereo Speakers with Nahimic Audio

I/O (Input/Output) Ports

Left Side

1 x Thunderbolt™ 4 (USB 4, DisplayPort™ 1.4)
1 x USB Type-C™ (USB 3.2 Gen 2⁶, DisplayPort™ 1.4)

Right Side

1 x USB Type-A 3.2 Gen 1⁶
1 x Audio Combo Jack
1 x E-Shutter Button

Rear

1 x USB Type-A (USB 3.2 Gen 1⁶ Always-On 5V)
1 x USB Type-A (USB 3.2 Gen 1⁶)
1 x USB Type-C™ (USB 3.2 Gen 2⁶, DisplayPort™ 1.4,
PD up to 135W)
1 x HDMI™ 2.1
1 x RJ45 Ethernet
1 x DC-In

PRELOADED SOFTWARE

- Lenovo Vantage
- Lenovo PC Manager
- McAfee LiveSafe™
- Lenovo Antivirus
- Microsoft Office Trial⁷
- Power2Go

¹ Supports NVIDIA® Max-Q Technologies: Advanced Optimus, Resizable BAR, Dynamic Boost 2.0.

² All battery life claims are approximate and based on results using the MobileMark® 2018 v1.0.2.46 battery life benchmark test. Actual battery life will vary and depends on many factors such as product configuration and usage, software use, wireless functionality, power management settings, and screen brightness. The maximum capacity of the battery will decrease with time and use.

³ Final battery life to be finalized Spring 2021 or Product SS 2021. Testing conducted by Lenovo.

⁴ With Overdrive (OD).

⁵ Optional.

⁶ The actual transfer speed of the USB 3.2 will vary and, depending on many factors, such as the processing capability of host and peripheral devices, file attributes and other factors related to system configuration and your operating environments, will be slower than a speed of 20 Gbit/s.

⁷ Except Japan, India and China.

LENOVO SERVICES

Legion Ultimate Support[†]

Legion Ultimate Support is here to be your META - Most Effective Tactic Available. With one single point of contact, get 24/7 gamer-centric support from a team of IT experts who are gaming specialists and can help optimize your hardware & software settings to keep you productive all day and unbeatable at night.

Lenovo Smart Performance

Smart Performance Services within Lenovo Vantage will keep your system running at optimum performance and proactively fix issues that affect PC performance, internet performance, and security.

Lenovo Accidental Damage Protection

Avoid the hassles of unexpected damage & repair costs. With coverage for drops, spills, electric surges, and broken LCD screens, accidental damage protection makes it easy to repair to your PCs and ensures your device is up and running fast.

Lenovo Warranty Extensions (1-to-3 Years Duration)

Gain complete peace of mind by extending your warranty to minimize unexpected expenses and repair costs.

[†] Available in NA, CA, IN, JP only. Not available in EMEA, ANZ, and LAS.

OPTIONS & ACCESSORIES



Lenovo Legion
M300s RGB
Gaming Mouse



Lenovo Legion
H300 Stereo
Gaming Headset



Lenovo Legion
Active Gaming
Backpack

McAfee® LiveSafe™

Register McAfee® to enjoy these benefits in your FREE 30-day trial.

- Award-winning Antivirus
- Multi-device Compatibility
- Password Manager
- Identity Theft Protection
- Safe Web Browsing
- Free Customer Support

* Example of Lenovo catalogue naming convention

Legion	5 P	1 6 I A H 7
Sub-brand	Position	Screen size or volume (litre)



WWW.LENOVO.COM

Lenovo reserves the right to alter product offerings and specifications at any time, without notice. Lenovo makes every effort to ensure accuracy of all information but is not liable or responsible for any editorial, photographic or typographic errors. All images are for illustration purposes only. For full Lenovo product, service and warranty specifications visit www.lenovo.com. Lenovo makes no representations or warranties regarding third party products or services. **Trademarks:** The following are trademarks or registered trademarks of Lenovo: Lenovo, the Lenovo logo, ideapad, IdeaCentre, yoga and yoga home. Microsoft, Windows and Vista are registered trademarks of Microsoft Corporation. Ultrabook, Celeron, Celeron Inside, Core Inside, Intel, Intel Logo, Intel Atom, Intel Atom Inside, Intel Core, Intel Inside, Intel Inside Logo, Intel vPro, Itanium, Itanium Inside, Pentium, Pentium Inside, vPro Inside, Xeon, Xeon Phi, and Xeon Inside are trademarks of Intel Corporation in the U.S. and/or other countries. Other company, product and service names may be trademarks or service marks of others. Visit www.lenovo.com/lenovo/us/en/safecomp/ periodically for the latest information on safe and effective computing. ©2022 Lenovo. All rights reserved.



Lenovo