

LENOVO TAB M8 (3rd GEN) with the Smart Charging Station

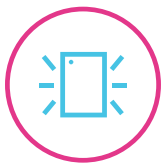
THE ENTERTAINMENT TABLET THAT DOES MORE.

THE NEW 3rd GENERATION 8" TABLET THAT CAN DO MORE WITH GOOGLE ASSISTANT'S AMBIENT MODE.

Lenovo Smart Tab M8 is the new generation entertainment that allows you to do more, hands-free with Google Assistant's ambient mode. It is a stunning tablet with 8" TDDI IPS display featuring two-sided narrow borders, upgraded octa-core processors and all-day battery life. More than that, you can transform your tablet into a smart home hub with the Lenovo Smart Charging. Voice control your home with Google Assistant.



WHY YOU SHOULD CHOOSE THE LENOVO TAB M8 (3rd GEN) WITH THE SMART CHARGING STATION



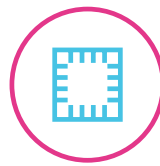
Premium Metal Design

Compact and classy with a full metal cover design.



TDDI Display

Vibrant 8" IPS display with TDDI technology.



Octa-Core Processor

- Fast and powerful with up to 2.3 GHz clock speed.
- Up to 4 GB RAM.



Long Battery Life

- Up to 15 hours of video playback¹.
- Up to 30% faster charge².



Google Kids Space

Built-in kids' mode with Google Kids Space

Quality content to help kids discover, create and grow³.



Entertainment Space

Comes with Entertainment Space from Google

One delightful home for all the entertainment you love.

GOOGLE ASSISTANT'S AMBIENT MODE⁴ (WITH THE SMART CHARGING STATION)



Just ask
Google
Assistant



Ask to
listen to
music



Ask to
control
your home

¹ All battery life claims are approximate. Actual battery performance will vary and depend on numerous factors including product configuration and usage, software, operating conditions, wireless functionality, power management settings, screen brightness and other factors. The maximum capacity of the battery will naturally decrease with time and usage.

² Compared with the previous generation.

³ Google Kids Space requires a Google Account for your child. Service availability and content may vary.

⁴ Google Assistant requires an internet connection, and may not be available in all countries and languages. Controlling certain devices in your home requires compatible smart devices. Subscriptions for services and applications may be required and additional terms, conditions and/or charges may apply.

* Google, Android, Google Kids Space and Family Link are trademarks of Google LLC.



WWW.LENOVO.COM

TUV-certified eye care



Lenovo

LENOVO™ TAB M8 (3rd GEN) with the Smart Charging Station

SPECIFICATIONS

DESIGN



Weight

About 305 g (0.67 lbs)

Operating System

Android™ 11

Display

Size : 8"
Type : IPS
Resolution : HD (1280 x 800)
Screen : TDDI LCD Display
Brightness : 350 nits
Touch : 10-point Multi-touch

Color

Iron Grey

SIM

Type : Nano SIM Card¹
Slot : Single Slot

Login Security

Fingerprint : N/A
Face Unlock : Yes

Integrated Camera

Rear
5 MP Auto-Focus

Front
2 MP Fixed-Focus



Sensors

Accelerometer (G Sensor)
Ambient L-Sensor
P-Sensor
Vibrator

Buttons and Ports

Volume Up/Down
Power Button
3.5 mm Audio Jack
USB Type-C™ 2.0
Two-point Pogo-pin

PERFORMANCE

Processor

MediaTek® Helio P22T (4 x 2.3 GHz + 4 x 1.8 GHz)

Audio²

Dolby Atmos® (2 Microphones)

Speakers

Dual Front-Facing Speakers

Memory

RAM + ROM : 3 GB + 32 GB / 4 GB + 64 GB
(LPDDR4x)

Card Slot : Expandable microSD™ Card
(exFAT up to 2 TB, FAT32 up to 128 GB)

Battery³ (for ROW SKU)

Type : Li-Ion Polymer
Capacity : 5100 mAh
(typical value)

Video Playback Time : Up to 15 Hours

Web Browsing Time : Up to 18 Hours



CONNECTIVITY

Wireless Connectivity

WLAN : WiFi 802.11 a/b/g/n,
2.4 GHz & 5 GHz

Bluetooth® : 5.0

WiFi Direct : Yes

GPS/Beidou : Yes

A-GPS : Yes

FM Radio : Yes

GLONASS : Yes

Bands Supported

For ROW SKU

GSM : B2/B3/B5/B8

WCDMA : B1/B2/B5(B6/B19)/B8

FDD LTE : B1/B2/B3/B4/B5(B19)/B7/B8/
B20/B26/B28(a+b)

TDD LTE : B38/B40/B41⁴



SOFTWARE

- Google Entertainment Space
- Google Kids Space
- Google Assistant
- Gmail
- Google Messages
- Google Phone (LTE Voice devices only)
- Google Chrome
- Google Play Music
- Google Photo
- Google Calendar
- Google Search

¹ For LTE SKU only.

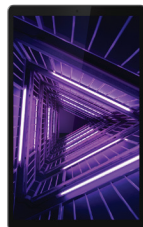
² Dedicated digital signal processor for far-field voice recognition.

³ All battery life claims are approximate. Actual battery performance will vary and depend on numerous factors including product configuration and usage, software, operating conditions, wireless functionality, power management settings, screen brightness and other factors. The maximum capacity of the battery will naturally decrease with time and usage.

⁴ Full bandwidth.

WHAT'S IN THE BOX

- Lenovo Tab M8 (3rd Gen)
with the Smart Charging Station
- 5V/2A Charging Adapter
- USB Type-C™ 2.0 Cable (1 m) for the Tablet
- Micro-USB Cable (1.2 m) for the
Smart Charging Station
- Quick Start Guide
- SIM PIN



ACCESSORIES



Lenovo Kid's Bumper

RECOMMENDED LENOVO SERVICES

Warranty Extensions (1-to-3 Years Total Duration)* The fixed-term, fixed-cost service helps accurately budget for PC expense, protect your valuable investment and potentially lower the cost of ownership.

Accidental Damage Protection* Avoid the hassles of unexpected repair costs. Provides coverage for non-warranted damage incurred under normal operating conditions, such as minor spills, drops or damage to the integrated screen.

* Not available in all countries.

WANT MORE?

Lenovo Tab M10 HD
(2nd Gen)



WWW.LENOVO.COM



android

Lenovo reserves the right to alter product offerings and specifications at any time, without notice. Lenovo makes every effort to ensure accuracy of all information but is not liable or responsible for any editorial, photographic or typographic errors. All images are for illustration purposes only. For full Lenovo product, service and warranty specifications visit www.lenovo.com. Lenovo makes no representations or warranties regarding third party products or services. **Trademarks:** The following are trademarks or registered trademarks of Lenovo: Lenovo, the Lenovo logo, Yoga, Google and the Google logo are trademarks of Google Inc. Android is a trademark of Google Inc. Ultrabook, Celeron, Celeron Inside, Core Inside, Intel, Intel Logo, Intel Atom, Intel Atom Inside, Intel Core, Intel Inside, Intel Inside Logo, Intel vPro, Itanium, Itanium Inside, Pentium, Pentium Inside, vPro Inside, Xeon, Xeon Phi and Xeon Inside are trademarks of Intel Corporation in the U.S. and/or other countries. Other company, product and service names may be trademarks or service marks of others. Battery life (and recharge times) will vary based on many factors including system settings and usage. ©2021 Lenovo. All rights reserved.

Lenovo