

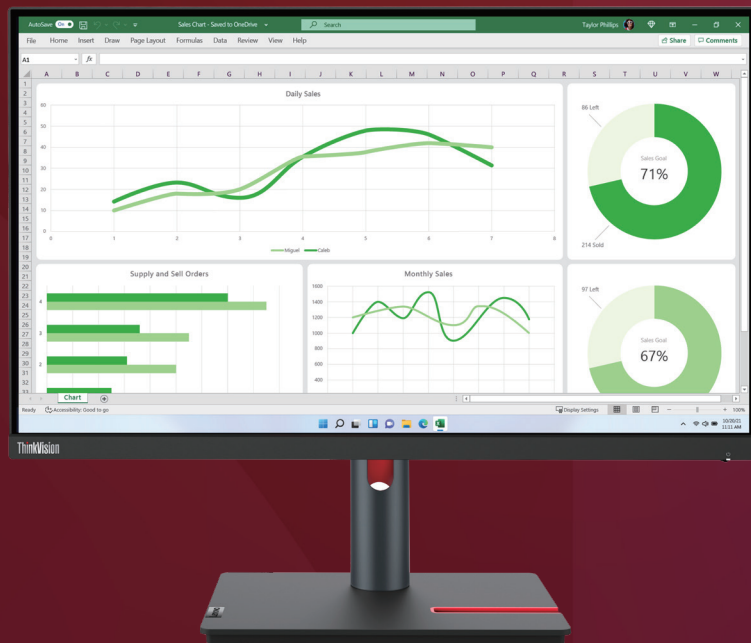
## ThinkVision P24h-30 Monitor

# High-performance monitor that multiplies productivity.

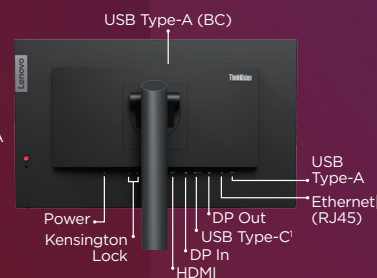
Smarter  
technology  
for all

USB Type-C<sup>1</sup> for ultimate docking.

Unleash your productivity with the ThinkVision P24h-30 Monitor. The performance-loaded monitor features a 23.8-inch QHD (2560 x 1440) resolution In-Plane Switching display that offers better viewing angles and renders exceptionally detailed pictures to speed up your work. The mix of 99% sRGB with calibrated color accuracy delivers vibrant colors that pop while navigating image-laden documents. HDR10 support delivers incredibly rich life-like HDR video content. A 3-side NearEdgeless design affords a distraction-free daisy chaining experience that allows you to connect multiple monitors via DP cable for a panoramic view of information that helps you to see and accomplish more. It is purpose-built for collaboration with a one-cable USB Type-C<sup>1</sup> solution. Connect and display your PC while charging it via 100W power delivery<sup>2</sup>. Manage your video conferencing or audio demand through AI-enhanced MC60 Monitor Webcam<sup>3</sup> and MS30 Monitor Soundbar<sup>3</sup> cableless solution. The ethernet port on the monitor makes connecting to the internet safer and more stable, and accommodates MAPT, PXE, and WOL. Breeze through long work hours without straining your eyes with its built-in Natural Low Blue Light technology. Customize your workstation the way you like it for improved posture and productivity with its lift, tilt, pivot, swivel functions. It's eco-friendly too - perfectly in sync with TCO 9.0 norms, built largely using recycled plastic resins and packaged in the recyclable pulp. All in all, the ThinkVision P24h-30 is built to be a productivity-powerhouse that's environmentally conscious too.



## Features of ThinkVision P24h-30 Monitor



### Extraordinary visual experience

The ThinkVision P24h-30 Monitor has 3-side Near-Edgeless bezels that delivers a seamless canvas for daisy chaining. A 23.8-inch QHD (2560 x 1440) In-Plane Switching screen produces sharp, punchy images, and offers wider viewing angles. QHD resolution provides 1.77 times more clarity than a Full-HD display. The pre-calibrated 99% sRGB color space together with 99% BT.709 ensures color consistency. The monitor's HDR10 support delivers rich vivid HDR video content. The ThinkVision P24h-30 Monitor's Natural Low Blue Light technology cares for your eyes without affecting color accuracy.

### Plug in to productivity

Effortlessly connect and display your PC with a convenient USB-C<sup>1</sup> one-cable solution that simultaneously supports 100W power delivery<sup>2</sup>. The ethernet port accommodates MAPT, PXE, and WOL, and facilitates high data transfers between connected devices making internet surfing safer and more stable. It supports daisy chain capability for up to two QHD monitors via a DP cable. Collaborate and control easily with Lenovo PCs via a mirrored power button function. ThinkVision P24h-30 also supports cableless MC60 Monitor Webcam<sup>3</sup> and MS30 Monitor Soundbar<sup>3</sup> for incredible video conferencing experiences, making your desk clean and clutter-free.

### Care for your wellness and the environment

The ThinkVision P24h-30 Monitor's ergonomic and fully functional stand lets you lift, tilt, pivot, and swivel the monitor for a comfortable viewing position that reduces neck and back strain. The stand features a phone holder and cable management clip for a clutter-free desktop. Easily customize settings via a one-button joystick. You could also VESA mount the monitor for a clutter-free desk. ThinkColour<sup>4</sup> software allows for easy calibration of display settings. With its focus on your comfort and the environment, ThinkVision P24h-30 Monitor complies with the latest TCO 9.0 regulations and comes encased in recyclable paper pulp packaging.

<sup>1</sup> USB Type-C<sup>®</sup> and USB-C<sup>®</sup> are registered trademarks of USB Implementers Forum. | <sup>2</sup> Actual capacity of power delivery may vary depending upon devices connected or monitor configuration, and may decline with downstream USB ports connected or higher brightness setting. | <sup>3</sup> Sold separately. | <sup>4</sup> This software can only be used with Windows 10 & Windows 11.

# ThinkVision P24h-30 Monitor

## Display

**Panel Size**  
23.8-inch

**Screen Dimensions**  
534.9 mm x 303.1 mm

**Panel Type**  
3-side NearEdgeless  
In-Plane Switching

**Active Area**  
526.8 mm x 296.3 mm

**Backlight**  
WLED

**Aspect Ratio**  
16:9

**Resolution**  
2560 x 1440

**Pixel Pitch**  
0.205 mm x 0.205 mm

**Dot/Pixel Per Inch (DPI/PPI)**  
123

**Viewing Angle (H x V @ CR 10:1)**  
178° / 178°

**Response Time**  
4ms (Extreme Mode),  
6ms (Normal Mode)

**Refresh Rate**  
60Hz

**Brightness (Typical)**  
300 cd/m<sup>2</sup>

**Contrast Ratio (Typical)**  
1000:1

**Dynamic Contrast Ratio (Typical)**  
3M:1

**Color Gamut (Coverage Ratio)**  
99.0% sRGB (CIE 1931),  
99.0% BT.709 (CIE 1976)

**Color Support (Typical)**  
16.7 Million

**Color Depth**  
8-bit (6+FRC)

**HDR Compliance**  
Yes (HDR10)

**Anti-Glare**  
Yes

## Connectivity

**Video Signal**  
1 x USB Type-C<sup>1</sup> Gen 1  
(DP 1.4 Alt Mode)  
1 x HDMI 2.1<sup>2</sup>  
1 x DP 1.4  
1 x DP Out

**Audio Signal**  
1 x Audio Out (3.5 mm)

**USB Hub**  
Yes

**Ethernet**  
Yes (10M/100M/1000M)

**USB Upstream**  
1 x USB 3.2 Gen 1<sup>3</sup> (by USB Type-C<sup>1</sup>)

**USB Downstream**  
4 x USB 3.2 Gen 1<sup>3</sup> (1 x BC1.2)

## Multimedia

**Modular Camera/Speaker Support**  
Yes (Optional Support<sup>4</sup>)

## Special Features

**Factory Calibration**  
Yes (Delta-E Color Accuracy (<2))

**Software**  
Lenovo ThinkColour  
(Lenovo Display Control Center)<sup>5</sup>

**Natural Low Blue Light**  
Yes

## Power

**Power Consumption (Typ. / Max.)**  
27W / 161W

**Power Consumption Sleep/Off Mode**  
< 0.5W

**Power Consumption Switch-Off Mode**  
< 0.3W

**ENERGY STAR Power Consumption (Pon/E<sub>REC</sub>)**  
18W / 57kWh

**Power Supply**  
Internal

**USB Type-C<sup>1</sup> (DP Alt Mode) Power Delivery<sup>6</sup>**  
Up to 100W

**Smart Power**  
Yes

**Voltage Required**  
AC 100 to 240 V (50-60 Hz)

## Mechanical

**Tilt Angle (Front / Back)**  
-5° / 23.5°

**Swivel Angle (Left / Right)**  
-45° / 45°

**Lift (Max. Range)**  
155 mm

**Pivot**  
-90° / 90°

**VESA Mount Capability**  
Yes (100 x 100 mm)

**ThinkCentre M Series Tiny Support**  
Yes, by Tiny Clamp Bracket  
Mounting Kit III (PN: 4XFIK72399)<sup>7</sup>

**Kensington Lock Slot**  
Yes (2.5 mm x 6 mm and 3 mm x 7 mm)

**Cable Management**  
Yes

**Bezel Color**  
Raven Black

**Bezel Width (Side)**  
2.0 mm

**Bezel Width (Top / Bottom)**  
2.0 / 18.0 mm

## Dimension

**Size Packed (D x H x W) (mm/inch)**  
160.0 x 420.0 x 620.0 mm  
6.30 x 16.54 x 24.41 inches

**Size Unpacked w/ Stand (Lowest Position) (D x H x W) (mm/inch)**  
199.7 x 348.8 x 539.5 mm  
7.86 x 13.73 x 21.24 inches

**Size Unpacked w/ Stand (Highest Position) (D x H x W) (mm/inch)**  
199.7 x 503.8 x 539.5 mm  
7.86 x 19.83 x 21.24 inches

**Size Unpacked w/o Stand (Head Only) (D x H x W) (mm/inch)**  
46.5 x 323.7 x 539.5 mm  
1.83 x 12.74 x 21.24 inches

**Weight Packed (kg / lbs.)**  
8.6 kg / 19.0 lbs.

**Weight Unpacked (kg / lbs.)**  
5.7 kg / 12.6 lbs.

**Weight (Monitor Head Only) (kg / lbs.)**  
3.8 kg / 8.4 lbs.

## What's in the Box

**Monitor with Stand**  
Yes

**Power Cable (Cable Length)**  
1 x Power Cable (1.8 m)

**DP Cable (Cable Length)**  
1 x DP 1.2 Cable (1.8 m) (For NA, Brazil, and PRC WS; No for EMEA, AP, LAS, and PRC SA)

**HDMI Cable (Cable Length)**  
1 x HDMI 2.1<sup>2</sup> Cable (1.8 m) (For PRC SA; No for PRC WS, ROW NA, EMEA, AP, and LA)

**USB-C<sup>1</sup> Cable (Cable Length)**  
USB Type-C<sup>1</sup> Gen 1 Cable (1.8 m)

**USB Cable (Cable Length)**  
USB Type-C<sup>1</sup> to Type-A Cable (1.8 m)  
(For NA and Brazil; No for PRC WS, PRC SA, ROW EMEA, AP, and LAS)

**Factory Calibration Report**  
Yes

**Quick Setup Guide**  
Yes

**Warranty Booklet**  
Yes

## Certification

**ENERGY STAR Certification**  
Yes

**CCC**  
Yes

**TCO**  
9.0

**TCO Edge**  
2.0

**EPEAT**  
Gold

**Volatile Organic Compound Certification**  
Yes

**RoHS (2011/65/EU)**  
Yes

**Windows Certification**  
Windows 10, Windows 11

**China Energy Efficiency Standard**  
Tier 1

**TÜV Rheinland Eye Comfort**  
Yes

**TÜV Rheinland Low Blue Light**  
Yes

**TÜV Rheinland Flicker Free**  
Yes

**TÜV Low Blue Light (Hardware Solution)**  
Yes

**Eyesafe Display Certification**  
Yes (Eyesafe 2.0)



<sup>1</sup> USB Type-C\* and USB-C\* are registered trademarks of USB Implementers Forum. | <sup>2</sup> Supports 2560 x 1440 @ 60Hz as specified in HDMI 2.1. | <sup>3</sup> Depending on many factors such as the processing capability of peripheral devices, file attributes, and other factors related to system configuration and operating environments, the actual transfer rate using the various USB connectors on this device will vary and is typically slower than the data rates as defined by the respective USB specifications: 5 Gbit/s for USB 3.2 Gen 1; 10 Gbit/s for USB 3.2 Gen 2 & 20 Gbit/s for USB 3.2 Gen2x2. | <sup>4</sup> Compatible with ThinkVision VoIP Stack MC60 Monitor Webcam and MS30 Monitor Soundbar. | <sup>5</sup> This software can only be used with Windows 10 & Windows 11. | <sup>6</sup> Listed as maximum capacity of power delivery. Actual capacity of power delivery may vary depending upon devices connected or monitor configuration, and may decline with downstream USB ports connected or higher brightness setting. | <sup>7</sup> Sold separately.

© 2023 Lenovo. All rights reserved. These products are available while supplies last. Prices shown are subject to change without notice. For any questions concerning price, please contact your Lenovo Account Executive. Lenovo is not responsible for photographic or typographic errors. Warranty: For a copy of applicable warranties, write to: Warranty Information, 500 Park Offices Drive, RTP, NC 27709, U.S.A., Attn: Dept. ZPYA/B600. Lenovo makes no representation or warranty regarding third-party products or services. Trademarks: Lenovo, the Lenovo logo, Rescue and Recovery, ThinkPad, ThinkCentre, ThinkStation, ThinkVantage, ThinkVision, and ThinkColour are trademarks or registered trademarks of Lenovo. Microsoft, Windows, and Vista are registered trademarks of Microsoft Corporation. Intel, the Intel logo, Intel Inside, Intel Core, and Core Inside are trademarks of Intel Corporation in the U.S. and/or other countries. Other company, product, and service names may be trademarks or service marks of others.

Specifications may vary depending upon region.

Smarter  
technology  
for all

Lenovo