

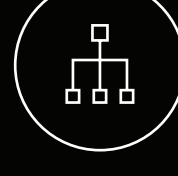


POWER-PACKED MONITOR FOR THE MODERN WORKFORCE

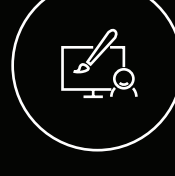
Workplaces are transforming, and businesses need to keep up with the evolving expectations. Millennials and Gen Z are hyperaware of the quality and user experience they want from their work monitors. The upgraded ThinkVision P27h-20, **engineered for tech-savvy professionals**, fits the bill perfectly. **QHD resolution** on this crisp display augments creativity and enables enhanced detailing. It delivers a premium, functional, and ergonomic experience with a stunning **27-inch, 4-side NearEdgeless In-Plane Switching** panel. Thanks to its **anti-glare screen**, this monitor is ideal for contemporary open offices. Designed to cater to your work style, you can easily connect to peripherals through the P27h-20's versatile connectivity ports, for a holistic experience. Moreover, this monitor's factory-calibrated color accuracy with average **Delta E<2, 99% sRGB, 99% BT.709, and multiple color spaces** offer excellent color performance. Integrated with Smart Power¹, the monitor offers full-functioned USB Type-C² one cable solution with the capability to deliver up to 90 W³ power delivery and an Ethernet signal. Equipped with ThinkColour Software,⁴ the ThinkVision P27h-20 lets you adjust advanced display settings to tailor your monitor to your specific needs. The ThinkColour menu is designed to be simple and convenient, so you can configure it in the best way for you.



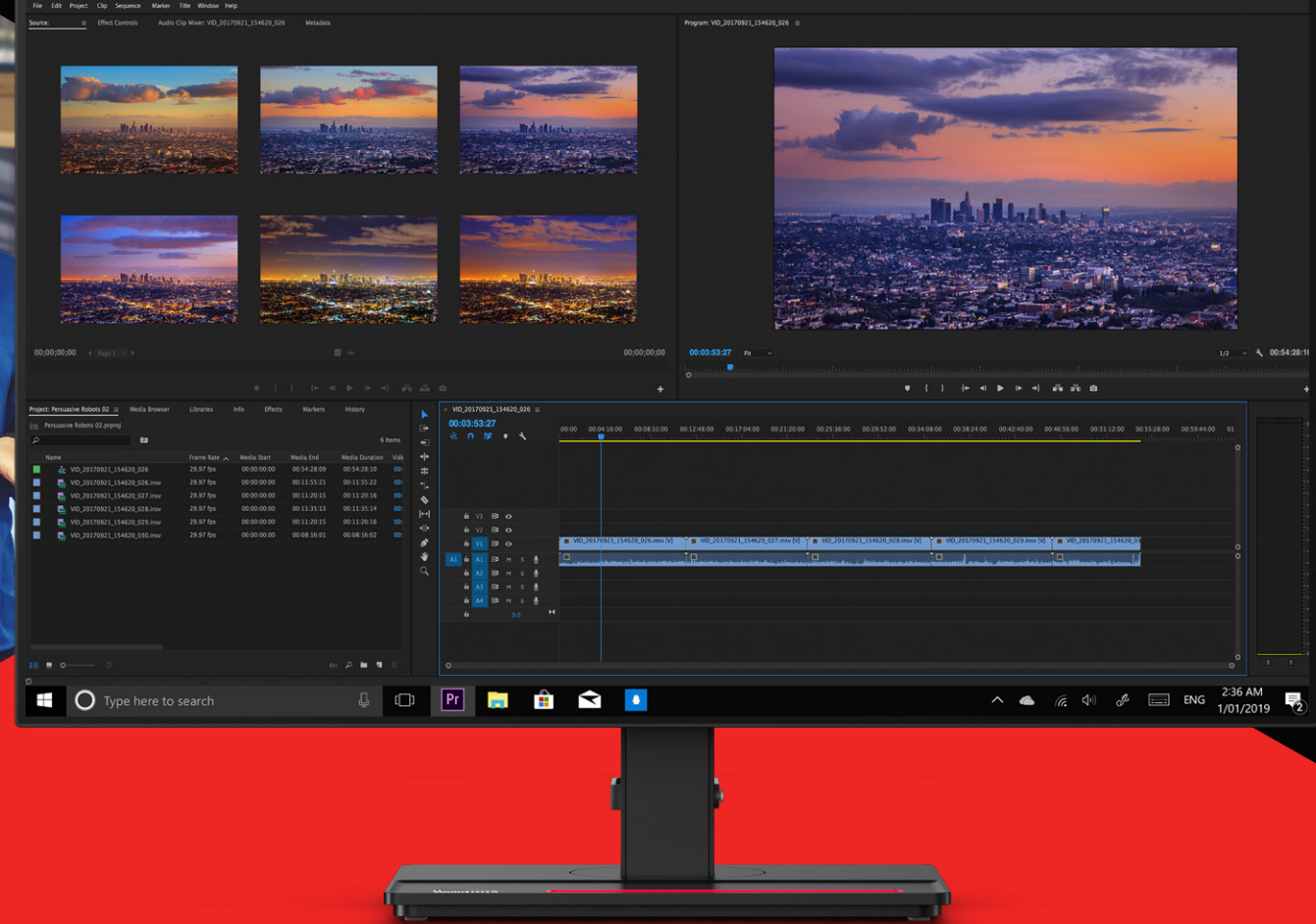
Amplified Viewing Experience



Advanced Connectivity



Functional Design



Impressive Visuals from Edge to Edge

The ThinkVision P27h-20 with its QHD resolution provides 1.77 times more clarity than a Full-HD display, enhancing the productivity of business professionals and content creators. Whether you are crunching numbers or editing visual content, you'll never miss a detail on the 4-side NearEdgeless In-Plane Switching panel and 178° viewing angles. The factory-calibrated 99% sRGB color gamut in addition to 99% BT.709 and 85% DCI-P3 provide the best color consistency and striking image quality. Lenovo exclusive ThinkColour software⁴ lets you effortlessly adjust advanced display settings using the mouse, enhancing efficiency and user experience.



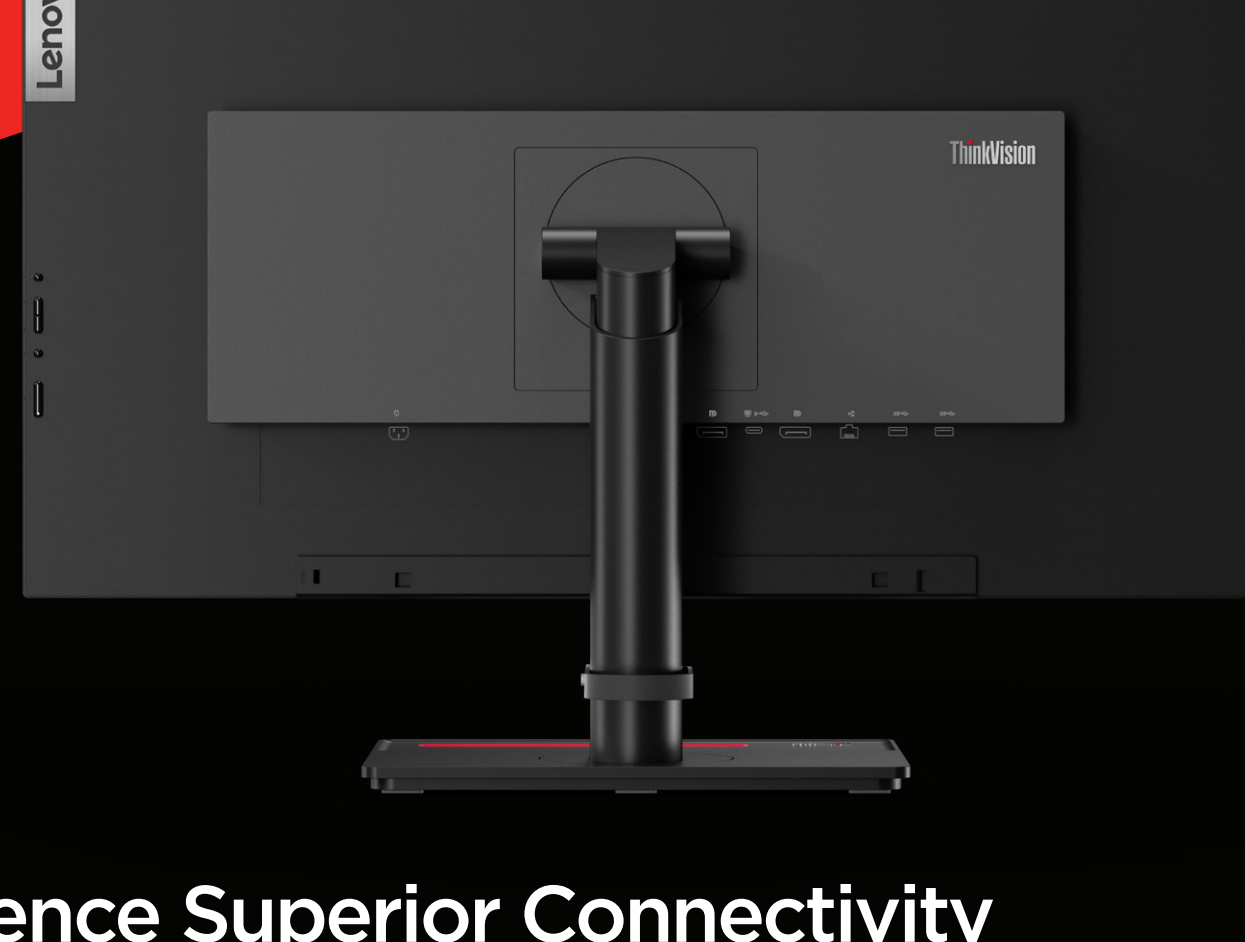
Display
4-side NearEdgeless In-Plane Switching Panel



Color Gamut and accuracy
99% sRGB
99% BT.709
85% DCI-P3
Delta E<2

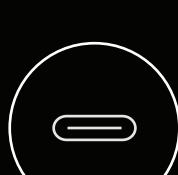


Resolution
QHD (2560 x 1440)



Experience Superior Connectivity

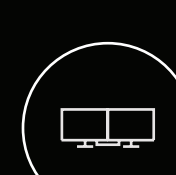
Collaborate effectively by connecting to various peripherals with the USB Type-C² one-cable solution, which also doubles up as a power charging cable. Conduct meetings and presentations seamlessly with the ethernet port, audio out, video, and USB data slots on offer. Multitasking will now be a breeze as you can daisy chain and create a multi-monitor setup via the DisplayPort. Smart Power¹ intelligently distributes power to connected USB and USB Type-C² devices, maximizing power supply efficiency while also reducing overall consumption.



Connectivity
One-cable Solution for Ethernet, video, audio, and data via USB Type-C²



Smart Power¹
Up to 90 W³ power delivery via USB Type-C²



Collaboration
1 x USB-C Gen1 (DP1.2 Alt Mode)
1 x HDMI 1.4
1 x DP 1.2
1 x USB 3.1 Gen1 (1 BC)
1 x Audio Out (3.5 mm)
1 x Ethernet



Efficient Workspace

The ThinkVision P27h-20 doesn't just look good but also enhances the user experience with ergonomic, space-saving, and easy-to-use features. Vertical stand with swivel, tilt, pivot, and increased lift functionality ensures easy positioning of the monitor and reduces strain on your neck and back. With flexible cable management system, wires don't get entangled, minimizing clutter. An integrated phone holder, VESA mount, and minimized square base also let you have an organized desk. The P27h-20 is TÜV Rheinland Eye Comfort-certified to minimize eye fatigue, ensuring you work exertion free.



Ergonomics
Full function Increased Lift Range (Max 135 mm)



Space-Saving
Upgraded family design Cable Management



Convenience
Phone holder

ThinkVision P27h-20 Monitor Specifications

<p>DISPLAY</p> <p>Panel Size 27-inch</p> <p>Screen Dimensions 596.74 mm x 335.66 mm</p> <p>Panel Type 4-side NearEdgeless In-Plane Switching</p> <p>Backlight WLED</p> <p>Aspect Ratio 16:9</p> <p>Resolution 2560 x 1440</p> <p>Pixel Pitch 0.2331 x 0.2331 mm</p> <p>Dot/Pixel Per Inch (DPI/PPI) 109</p> <p>Viewing Angle (H x V @ CR 10:1) 178° / 178°</p> <p>Response Time 4ms (extreme mode) 6ms (normal mode)</p> <p>Refresh Rate 60 Hz</p> <p>Brightness (typical) 350 cd/m²</p> <p>Contrast Ratio (typical) 1000:1</p> <p>Dynamic Contrast Ratio (typical) 3M:1</p> <p>Color Gamut 99% sRGB, 99% BT.709, 85% DCI-P3</p> <p>Color Support (typical) 16.7 Million</p> <p>Processor LUT 8-bit</p> <p>Anti-glare Yes</p>	<p>MULTI-MEDIA</p> <p>Integrated Speakers Yes (2 x 1W)</p> <p>Optional Speaker Support Yes (PN OA36190)</p> <p>SPECIAL FEATURES</p> <p>Factory Calibration Yes (Avg. Delta E<2)</p> <p>Software Lenovo ThinkColour (Lenovo Display Control Center)⁴</p> <p>POWER</p> <p>Power Consumption (typ./max.) 27W / 150W</p> <p>Power Consumption Sleep/Off Mode < 0.5W</p> <p>Power Consumption Switch-off Mode < 0.3W</p> <p>ENERGY STAR Power Consumption (P_{on}/E_{TEC}) 19W / 61kWh</p> <p>Power Supply Internal</p> <p>USB Type-C Power Delivery (W) Up to 90 W³</p> <p>Smart Power¹ Yes</p> <p>Voltage Required AC 100 to 240 V (50-60 Hz)</p> <p>MECHANICAL</p> <p>Tilt Angle (front/back) -5° / 35°</p> <p>Swivel Angle (left/right) +45° / -45°</p> <p>Lift (max range) 135 mm</p> <p>Pivot -90° / 90°</p> <p>VESA Mount Capability Yes (100 x 100 mm)</p> <p>Kensington Lock Slot Yes</p> <p>Cable Management Yes</p> <p>Bezel Color Raven Black</p> <p>Bezel Width (side) 2.0 mm</p> <p>Bezel Width (top/bottom) 2.0 / 2.0 mm</p> <p>DIMENSION</p> <p>Size Packed (D x H x W, mm/inch) 182 x 463 x 722 mm 7.17 x 18.23 x 28.43 inches</p>	<p>Size Unpacked w/ Stand (D x H x W, mm/inch) (lowest position) 208 x 441.5 x 613.8 mm 8.19 x 17.38 x 27.17 inches</p> <p>Size Unpacked w/ Stand (highest position) 208 x 576.5 x 613.8 mm 8.19 x 22.70 x 27.17 inches</p> <p>Size Unpacked w/ Stand (head only) (D x H x W, mm/inch) 46.9 x 353.8 x 613.8 mm 1.85 x 13.92 x 27.17 inches</p> <p>Min. Distance from Table to Panel (lowest pixel at bottom of screen, mm) 97.3 mm</p> <p>Max. Distance from Table to Panel (highest pixel at top of screen, mm) 567.9 mm</p> <p>Weight Packed (kg/lbs.) 9.55 kg / 21.01 lbs.</p> <p>Weight Unpacked (kg/lbs.) 7.35 kg / 16.17 lbs.</p> <p>Weight (monitor head only) (kg/lbs.) 4.87 kg / 10.71 lbs.</p> <p>Full Container Load (40' STD / 20' STD) 792 / 352 units</p> <p>WHAT'S IN THE BOX</p> <p>Monitor stand 1 x Power cable (1.8 m) 1 x DP cable (1.8 m) (NA only) 1 x USB Type-C to Type-A cable (1.8 m) 1 x USB Type-C to Type-A cable (1.8 m) (NA only) Factory calibration report Quick setup guide</p> <p>CERTIFICATION</p> <p>ENERGY STAR Rating 8.0</p> <p>CCC Yes</p> <p>TCO 8.0</p> <p>TCO Edge 2.0</p> <p>PEAT Silver</p> <p>RoHS (EU 2002/95/EC) Yes</p> <p>Windows Certification Windows 7, Windows 10</p> <p>China Energy Efficiency Standard Tier 1</p> <p>TÜV Rheinland Eye Comfort Yes</p>
---	--	--

¹The Smart Power function intelligently detects overall power consumption and dynamically manages the power delivery to each device.
²USB Type-C² and USB-C² are registered trademarks of USB Implementers Forum.
³Listed as maximum capacity of power delivery. Actual capacity may vary depending upon devices connected or monitor configuration, and may decline with downstream USB ports connected or higher brightness setting.
⁴This software can only be used with Windows 10.