

Yoga 9i 2-in-1 (14", 9)

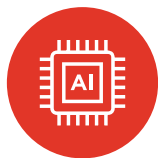
Shape your creativity.

See the world in a different perspective with the Yoga 9i 2-in-1, giving you 360° ways to work and play. With every flip and turn, you have a workstation, creative studio, and entertainment hub right in your hands. Soak in gorgeous pictures of exacting colors and submerge in room-filling acoustics from Bowers & Wilkins speakers. The handy magnetically attached Slim Pen is always by your side, so you can write, sketch, and note down at any moment. Featuring exceptional performance alongside accelerated machine learning, this is where your creativity comes to life.



Unlock new AI experiences

Powered with the latest Intel® Core™ Ultra 7 processors, the Yoga 9i 2-in-1 is primed and ready to take on any challenge big or small. Combined with accelerated machine learning from Lenovo AI Engine+, it unlocks maximum performance and creative efficiency. This Evo™ Edition comes with Intel® Arc™ graphics onboard, and it unleashes supercharged visuals for an elevated creative journey. For non-stop productivity, experience longer battery life with dynamic and intuitive power control from Smart Power.



Intuitively smart

In harmony with how you work, play, and create Lenovo AI Engine+ delivers an entire ecosystem of intuitive hardware and software that does all the brainwork for you. Equipped with a magnetic digital pen, the Yoga 9i 2-in-1 conjures up Smart Note for instant notetaking. And with the convenient Quick Keys, your go-to apps are ready to launch at your fingertips.



Sustainability built in. And out.

The Yoga 9i 2-in-1 is a certified carbon neutral product including recycled aluminum and post-consumer plastics used in crafting the device and it's packaged in fibre-based material made of FSC® paper. Certified by ENERGY STAR® for superior energy efficiency, it's also registered with an EPEAT® Gold rating for tackling product lifecycle, environment, and social impact at the highest level.



Designed to inspire

It's 360° of possibilities with the stunning 15.9 mm slim device, that's cut with glossy rounded sidewalls and a crafted unibody in a comfort-edge design for snug holds and carries. Flip it into tent mode for immersive entertainment, use it as a tablet for on-the-go productivity, or effortlessly switch to traditional laptop mode for crunching the keys. Whatever the task, you have what you need to shape your creativity.



Eyes on the prize

Pair your vision with immersive sound and brilliant clarity. The 14" PureSight OLED Display lights up your creations in up to 4K. Add sonic depth to your content with Dolby Atmos® spatial audio and experience deeper bass with sound by Bowers & Wilkins® with 4 x speakers and a user-facing rotating soundbar.



Yoga 9i 2-in-1 (14", 9)

SPECIFICATIONS

Yoga 9 14IMH9*

PERFORMANCE

Processor

Intel® Evo™ Edition Core™ Ultra 7 - 155H

Operating System

Windows 11 Home
Windows 11 Pro

Graphics

UMA : Intel® Arc™ Graphics

Memory

LPDDR5X : 16 GB / 32 GB; 7467 MHz

Storage

PCIe SSD Gen 4 M.2 : 512 GB / 1 TB

Camera & Microphone

5MP + IR Camera with Privacy Shutter

Resolution : 5.0M

Framerate : 30fps Max

Dual Array Microphones

Audio

4 x Bowers & Wilkins® Speakers
(2 x 2W Tweeter, 2 x 2W Woofer)

Battery¹ (75Whr)

2.8K/4K OLED

Local Video Playback : Up to 19.5 Hours

MobileMark® 25 : Up to 12.5 Hours



With Lenovo
AI Engine+

DESIGN

Display

14" 4K (3840 x 2400) OLED PureSight,
60 Hz, 16:10, 400 nits, 100% DCI-P3, VESA
Certified DisplayHDR™ True Black 500,
Dolby Vision®, 10-point Multi-touch Glass

14" 2.8K (2880 x 1800) OLED PureSight,
Up to 120 Hz, 16:10, 400 nits,
100% DCI-P3, VESA Certified DisplayHDR™
True Black 500, Dolby Vision®, 10-point
Multi-touch Glass

4-Side Narrow Bezel (92.7% AAR)

Top : 4.45 mm

Left/ Right : 2.1 mm

Bottom : 7.6 mm

Dimensions (W x D x H)²

(mm) : 316 x 220 x as thin as 15.9

(inches) : 12.44" x 8.66" x as thin as 0.63"

Weight

Starting at 1.32 kg (2.91 lbs)

Hinge

360°

Colors

Luna Grey

Cosmic Blue

CONNECTIVITY

WLAN

2x2 WiFi 6E (802.11 ax)

Bluetooth³

Bluetooth® 5.3

Input/Output (I/O) Ports

Left

2 x Thunderbolt™ 4.0 (Display Port /
Power Delivery / Data Transfer)

1 x USB Type-A Gen 3.2³

Right

1 x USB Type-C (Full function)

1 x Audio Combo Jack

1 x Power Button

PRELOADED SOFTWARE

- Windows 11 Home/Pro
- Lenovo Vantage
- Microsoft 365 Trial
- McAfee® LiveSafe™
- Dolby® Access (Dolby Vision® and Atmos®)
- Smart Note

NOTEABLE MENTIONS

- MIL-STD-810H
- Carbon Neutral
- EPEAT™ Gold
- ENERGY STAR® 8.0
- 100% Plastic-free Packaging

IN-BOX

- Sleeve (interior and exterior materials made from 100% recycled plastic)
- Lenovo Slim Pen (magnetically attached to top cover)
- Lenovo 600 Silent Mouse Bluetooth®⁴
- USB-C 3-in-1 Dongle (VGA/HDMI/USB-A)⁴
- Yoga TWS Earbuds⁴

¹ All battery life claims are approximate and based on two methods of testing: MobileMark® 2018 battery life benchmark @ 200 nits brightness and continuous 1080p video playback @ 150 nits brightness on the latest update of Windows 10. Actual battery life will vary and depends on many factors such as product configuration and usage, software use, wireless functionality, power management settings, and screen brightness. The maximum capacity of the battery will decrease with time and use.

² Height is calculated using T2 measurements and should be considered 'as thin as'.

³ The actual transfer speed of the USB 3.2 will vary and, depending on many factors, such as the processing capability of host and peripheral devices, file attributes and other factors related to system configuration and your operating environments, may be slower than a speed of 20 Gbit/s.

⁴ Optional in certain regions.

LENOVO SERVICES

Lenovo Premium Care Plus

Lenovo Premium Care Plus is the ultimate PC support experience with you as our priority 24/7. Enjoy personalized hardware and software support from a global network of elite technicians, along with accidental damage protection, fast repairs with onsite support, extended battery warranty, data migration assistance, and smart performance solutions that optimize PC performance and security.

Lenovo Smart Performance

Smart Performance Services within Lenovo Vantage will keep your system running at optimum performance and proactively fix issues that affect PC performance, internet performance, remove malware, and improve device security.

Lenovo Accidental Damage Protection

Avoid the hassles of unexpected damage & repair costs. With coverage for drops, spills, electric surges, and broken LCD screens, accidental damage protection makes it easy to repair to your PCs and ensures your device is up and running fast.

Carbon Neutral Certified Product

The Carbon Neutral Certified¹, EPEAT® Gold-registered², and ENERGY STAR® rated Yoga 9i 2-in-1 14" achieves plastic-free packaging with its paperboard-made, reusable laptop stand as cushioning. It's built with 50% recycled aluminum in the bottom cover. All paper used in packaging is FSC™-certified and made from other controlled material³.

Lenovo Sealed Battery Warranty

Long-lasting battery life is not just a feature but a necessity to help you stay productive and connected all day long. Protect your PC's sealed battery from degradation, enjoy hassle-free battery replacement service, and safeguard your PC from future battery failure with our Sealed Battery Warranty Service.

Lenovo Warranty Extensions (Up to 3 Years Duration)

Gain complete peace of mind by extending your base warranty to up to 3 years and minimize unexpected repair costs.

OPTIONS & ACCESSORIES



Sleeve
(included)



Lenovo 600
Silent Mouse Bluetooth®
(optional)



Lenovo
Slim Pen
(included)

McAfee® LiveSafe™

Register McAfee® to enjoy these benefits in your FREE 30-day trial.

- Award-winning Antivirus
- Password Manager
- Safe Web Browsing
- Multi-device Compatibility
- Identity Theft Protection
- Free Customer Support

* Example of Lenovo catalogue naming convention



Intel® platform codes

Gemini Lake: IGM, Whiskey Lake: IWL, Ice Lake: IIL, Gemini Lake: IGL, Comet Lake: IML, Tiger Lake: ITL, Alder Lake: IAP, Alder Lake-HX: IAX, Alder Lake-U15: IAU, Alder Lake-P28: IAP, Alder Lake-P28/U15: IAL, Alder Lake-H45: IAH, Alder Lake N: IAN, Raptor Lake-PX: IRP, Raptor Lake-H: IRH, Raptor Lake-HX: IRX, Alder Lake-M U9: IAM, Raptor Lake U: IRU, Meteor Lake-P: IMP, Meteor Lake-H: IMH, Raptor Lake-P: IRP, Raptor Lake-P28/U15: IRL, Raptor Lake-B: IRB, Raptor Lake-B: IRZ.

¹ Carbon Neutrality Certified by TÜV Rheinland.

² EPEAT®-registered where applicable — see www.epeat.net for registration status by country.

³ FSC License codes: C151697, C126093, Paperboard Laptop Stand's FSC License codes TBD.

WWW.LENOVO.COM

Lenovo reserves the right to alter product offerings and specifications at any time, without notice. Lenovo makes every effort to ensure accuracy of all information but is not liable or responsible for any editorial, photographic or typographic errors. All images are for illustration purposes only. For full Lenovo product, service and warranty specifications visit www.lenovo.com. Lenovo makes no representations or warranties regarding third party products or services. **Trademarks:** The following are trademarks or registered trademarks of Lenovo: Lenovo, the Lenovo logo, ideapad, IdeaCentre, yoga and yoga home. Microsoft, Windows and Vista are registered trademarks of Microsoft Corporation. Intel, the Intel logo, Intel Inside, Intel Core, and Core Inside are trademarks of Intel Corporation in the U.S. and/or other countries. Other company, product and service names may be trademarks or service marks of others. Visit www.lenovo.com/lenovo/us/en/safecomp/ periodically for the latest information on safe and effective computing. ©2023 Lenovo. All rights reserved.

