

Yoga 7i (14", 8)

Shape your creativity.

Enjoy endless multitasking and digital content creation with the 360-degree convertible laptop that's thin, slim, and ready to perform. Get an incredible display experience on up to a 2.8K OLED PureSight display that will leave you breathless, and Dolby Atmos® enhanced speakers that cap off the Yoga 7i's masterful creator and entertainment experience.



Engineered to do it all – that's a laptop evolved.

Thanks to the Yoga 7i laptop's 13th Gen Intel® processors, you're able to make, create, multitask, and more. Plus, this thin & light convertible laptop delivers a premium mobile experience while minimizing impact on responsiveness, battery life, or connectivity.



The ultimate flex

With a phenomenal 2-in-1, 360-degree convertible chassis that's thin & light, the Yoga 7i laptop gives you the flexibility to easily swap modes and do more. And with a military-grade durable design, this device can handle whatever is thrown its way.



Elevate your visual senses with OLED

Take your visual experience to the next level on the Yoga 7i. With a PureSight display featuring Dolby Vision® and an up-to-2.8K OLED touchscreen, you'll see true black hues and more vibrant, ultra-vivid colors. And with speakers enhanced by Dolby Atmos®, you'll get lost in the audio that flows around you.



Stay charged, stay productive

The Yoga 7i ensures you stay productive and on-the-go, thanks to an all-day battery that provides ample time to binge watch your favorite show after a day of work. When the battery finally does run out, you'll be back up and running in no time with Rapid Charge technology.



Yoga 7i (14", 8)

SPECIFICATIONS

Yoga 7 14IRL8*

PERFORMANCE

Processor

13th Gen Intel® Core™ i7 – 1360P
13th Gen Intel® Core™ i7 – 1355U
13th Gen Intel® Core™ i5 – 1340P
13th Gen Intel® Core™ i5 – 1335U

Operating System

Windows 11

Graphics

UMA: Intel® Iris® X*

Memory

LPDDR5 : 8 GB / 16 GB; Dual Channel; 5200 MHz

Storage

PCIe SSD Gen 4 : 512 GB / 1 TB

Camera

1080p FHD
IR RGB Camera with Privacy Shutter

Audio

2 x 2W Speakers
Dolby Atmos® Audio

Battery¹ (71Whr)

2.8K OLED
Local Video Playback : Up to 16.5 Hours
MobileMark® 2018 : Up to 11 Hours

WUXGA OLED

Local Video Playback : Up to 20.5 Hours
MobileMark® 2018 : Up to 12.5 Hours

2.2K IPS

Local Video Playback : Up to 22 Hours
MobileMark® 2018 : Up to 16.5 Hours

DESIGN

Display

14" 2.8K (2880 x 1800) OLED PureSight,
90 Hz, 16:10, 400 nits, 100% DCI-P3,
Dolby Vision®, 10-point Multi-touch Glass
14" WUXGA (1920 x 1200) OLED,
60 Hz, 16:10, 400 nits, 100% DCI-P3,
10-point Multi-touch Glass
14" 2.2K (2240 x 1400) IPS, 60 Hz, 16:10,
300 nits, 100% sRGB, Dolby Vision®,
10-point Multi-touch Glass

4-Side Narrow Bezel (91% AAR)

Left/Right : 2.4 mm
Top : 5.2 mm
Bottom : 9.9 mm

Dimensions (W x D x H)²

(mm) : 317.87 x 222.50 x as thin as 16.49
(inches) : 12.51" x 8.76" x as thin as 0.65"

Weight

OLED : Starting at 1.49 kg (3.28 lbs.)
LCD : Starting at 1.55 kg (3.42 lbs.)

Hinge

360°

Colors

Storm Grey | Tidal Teal

CONNECTIVITY

WLAN

Intel® WiFi 6E³ 2x2 802.11ax

Bluetooth®

Bluetooth® 5.1

Input/Output (I/O) Ports

1 x USB 3.2 Gen 1⁴ (Always On)
2 x Thunderbolt™ 4
(Data/DP 1.4/PD 3.0)
1 x HDMI 1.4b
1 x MicroSD Card Reader
(UHS-1(104) PCIe Gen 1)
1 x Audio Combo Jack

PRELOADED SOFTWARE

- Windows 11 Home/Pro
- Lenovo Vantage
- Microsoft Office 365 Trial
- McAfee® LiveSafe™
- Amazon Alexa³
- Dolby® Access (Dolby Vision® and Atmos®)

IN-BOX

Standard

Digital Pen or Precision Pen 2

Optional

Fingerprint Reader

NOTEABLE MENTIONS

- ENERGY STAR®
- EPEAT™ Gold Registered
- MIL-STD-810H
- TÜV Rheinland Eyesafe
- CO₂ Offset Service

With Lenovo
AI Engine+

LENOVO SERVICES

Lenovo Premium Care Plus

Lenovo Premium Care Plus is the ultimate PC support experience with you as our priority 24/7. Enjoy personalized hardware and software support from a global network of elite technicians, along with accidental damage protection, fast repairs with onsite support, extended battery warranty, data migration assistance, and smart performance solutions that optimize PC performance and security.

Lenovo Smart Performance

Smart Performance Services within Lenovo Vantage will keep your system running at optimum performance and proactively fix issues that affect PC performance, internet performance, remove malware, and improve device security.

Lenovo Accidental Damage Protection

Avoid the hassles of unexpected damage & repair costs. With coverage for drops, spills, electric surges, and broken LCD screens, accidental damage protection makes it easy to repair to your PCs and ensures your device is up and running fast.

Lenovo CO₂ Offset Services

Offset the carbon emissions of your PC with Lenovo CO₂ Offset Services – an easy and transparent solution to offset emissions across the average lifecycle of your device. These offsets are invested in UN-approved initiatives like renewable energy or ecological projects, thus contributing towards a more sustainable future.

Lenovo Sealed Battery Warranty

Long-lasting battery life is not just a feature but a necessity to help you stay productive and connected all day long. Protect your PC's sealed battery from degradation, enjoy hassle-free battery replacement service, and safeguard your PC from future battery failure with our Sealed Battery Warranty Service.

Lenovo Warranty Extensions (Up to 3 Years Duration)

Gain complete peace of mind by extending your base warranty to up to 3 years and minimize unexpected repair costs.

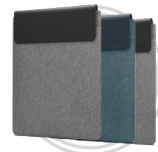
OPTIONS & ACCESSORIES



Lenovo Yoga
Mouse with Laser
Presenter



Lenovo Yoga Active
Noise Cancellation
Headphones



Lenovo
Yoga Sleeve

McAfee® LiveSafe™

Register McAfee® to enjoy these benefits in your FREE 30-day trial.

- Award-winning Antivirus
- Password Manager
- Safe Web Browsing
- Multi-device Compatibility
- Identity Theft Protection
- Free Customer Support

* Example of Lenovo
catalogue naming
convention

Yoga	7	1	4	I	R	L	8
Sub-brand	Positioning	Screen Size	Platform Code	Generation			

Intel® platform codes

Gemini Lake: IGM, Whiskey Lake: IWL, Icelake: IIL, Gemini Lake: IGL,
Comet Lake: IML, Tiger Lake: ITL, Alder Lake: IAP, Alderlake-HX: IAX,
AlderLake-U15: IAU, AlderLake-P28: IAP, AlderLake-P28/U15: IAL,
AlderLake-H45: IAH, Alderlake N: IAN, Raptorlake-PX: IRP, Raptorlake-H: IRH,
Raptorlake-HX: IRX, Alderlake-M U9: IAM, Raptorlake U: IRU, Meteorlake P: IMP,
Raptorlake-P: IRP, Raptorlake-P28/U15: IRL.

WWW.LENOVO.COM

Lenovo reserves the right to alter product offerings and specifications at any time, without notice. Lenovo makes every effort to ensure accuracy of all information but is not liable or responsible for any editorial, photographic or typographic errors. All images are for illustration purposes only. For full Lenovo product, service and warranty specifications visit www.lenovo.com. Lenovo makes no representations or warranties regarding third party products or services. **Trademarks:** The following are trademarks or registered trademarks of Lenovo: Lenovo, the Lenovo logo, IdeaPad, IdeaCentre, yoga and yoga home, Microsoft, Windows and Vista are registered trademarks of Microsoft Corporation. Intel, the Intel logo, Intel Inside, Intel Core, and Core Inside are trademarks of Intel Corporation in the U.S. and/or other countries. Other company, product and service names may be trademarks or service marks of others. Visit www.lenovo.com/lenovo/us/en/safecom/ periodically for the latest information on safe and effective computing. ©2023 Lenovo. All rights reserved.



Lenovo

Yoga 7i (16", 8)

Shape your creativity.

Designed to be daring. Including the latest generation of Intel® processors and Smart Power technology to push your performance to new peaks, the Yoga 7i's sprawling 16" 16:10 display offers rich, saturated, ultravivid colors and color accuracy alongside the brilliance of Dolby Vision® and a 100% sRGB color space – all in a 2-in-1 convertible with a comfort edge design. Play, perform, and create like never before.



Engineered to do it all – that's a laptop evolved.

Now featuring 13th Gen Intel® Core™ processors - that extend beyond performance. This Intel® Evo™ platform standard thin & light convertible laptop delivers a premium mobile experience for multitasking creatively while minimizing impact to responsiveness, battery life or connectivity.



Killer comfort and sleek style

The Yoga 7i laptop's Comfort Edge 2-in-1 design delivers a modern feel and ergonomic handling. With soft edges and a polished finish, the result is a secure and comfortable grip that allows smooth transitions when switching between the four foldable modes.



Clear, quieter, and safer calls

Improve your hybrid lifestyle with an elevated video call experience on the Yoga 7i. Get ultra high quality video with the FHD webcam and clear voice call quality – thanks to noise cancellation technology. And with Smart Login facial recognition support, and a privacy shutter, you can start your sessions quickly and securely.



Sights & sounds that draw you closer

Whether you're working or playing, dive into the Yoga 7i laptop's rich, ultra-vivid, and photorealistic colors with Dolby Vision®. The up-to-2.5K display with a large aspect ratio offers an expanded field of vision with immersive and captivating visuals. And with Dolby Atmos®-optimized speakers, listen to flowing 3D audio.



Yoga 7i (16", 8)

SPECIFICATIONS

Yoga 7 16IRL8*

PERFORMANCE

Processor

13th Gen Intel® Core™ i7 – 1360P

13th Gen Intel® Core™ i7 – 1355U

13th Gen Intel® Core™ i5 – 1340P

13th Gen Intel® Core™ i5 – 1335U

Operating System

Windows 11

Graphics

UMA : Intel® Iris® X*

Memory

LPDDR5 : 8 GB / 16 GB; Dual Channel; 5200 MHz

Storage

PCIe SSD Gen 4 : 256 GB / 512 GB / 1 TB

Camera

1080p FHD

IR RGB Camera with Privacy Shutter

Audio

2 x 2W Speakers

Dolby Atmos® Audio

Battery¹ (71Whr, 4-Cell)

2.5K IPS

Local Video Playback : Up to 20.5 Hours

MobileMark® 2018 : Up to 12.5 Hours

WUXGA

Local Video Playback : Up to 21.5 Hours

MobileMark® 2018 : Up to 13.5 Hours



With Lenovo
AI Engine+

LENOVO SERVICES

Lenovo Premium Care Plus

Lenovo Premium Care Plus is the ultimate PC support experience with you as our priority 24/7. Enjoy personalized hardware and software support from a global network of elite technicians, along with accidental damage protection, fast repairs with onsite support, extended battery warranty, data migration assistance, and smart performance solutions that optimize PC performance and security.

Lenovo Smart Performance

Smart Performance Services within Lenovo Vantage will keep your system running at optimum performance and proactively fix issues that affect PC performance, internet performance, remove malware, and improve device security.

Lenovo Accidental Damage Protection

Avoid the hassles of unexpected damage & repair costs. With coverage for drops, spills, electric surges, and broken LCD screens, accidental damage protection makes it easy to repair to your PCs and ensures your device is up and running fast.

Lenovo CO₂ Offset Services

Offset the carbon emissions of your PC with Lenovo CO₂ Offset Services – an easy and transparent solution to offset emissions across the average lifecycle of your device. These offsets are invested in UN-approved initiatives like renewable energy or ecological projects, thus contributing towards a more sustainable future.

Lenovo Sealed Battery Warranty

Long-lasting battery life is not just a feature but a necessity to help you stay productive and connected all day long. Protect your PC's sealed battery from degradation, enjoy hassle-free battery replacement service, and safeguard your PC from future battery failure with our Sealed Battery Warranty Service.

Lenovo Warranty Extensions (Up to 3 Years Duration)

Gain complete peace of mind by extending your base warranty to up to 3 years and minimize unexpected repair costs.

WWW.LENOVO.COM

Lenovo reserves the right to alter product offerings and specifications at any time, without notice. Lenovo makes every effort to ensure accuracy of all information but is not liable or responsible for any editorial, photographic or typographic errors. All images are for illustration purposes only. For full Lenovo product, service and warranty specifications visit www.lenovo.com. Lenovo makes no representations or warranties regarding third party products or services. **Trademarks:** The following are trademarks or registered trademarks of Lenovo: Lenovo, the Lenovo logo, ideapad, IdeaCentre, yoga and yoga home, Microsoft, Windows and Vista are registered trademarks of Microsoft Corporation. Intel, the Intel logo, Intel Inside, Intel Core, and Core Inside are trademarks of Intel Corporation in the U.S. and/or other countries. Other company, product and service names may be trademarks or service marks of others. Visit www.lenovo.com/lenovo/us/en/safecom/ periodically for the latest information on safe and effective computing. ©2023 Lenovo. All rights reserved.

DESIGN

Display

16" 2.5K (2560 x 1600) IPS, 60 Hz, 16:10, 400 nits, 100% sRGB, 10-point Multi-touch Glass

16" WUXGA (1920 x 1200) IPS, 60 Hz, 16:10, 300 nits, 45% NTSC, 10-point Multi-touch Glass

4-Side Narrow Bezel (91% AAR)

Left/Right : 2.8 mm

Top : 5.2 mm

Bottom : 9.9 mm

Dimensions (W x D x H)²

(mm) : 362.16 x 250.12 x as thin as 16.99

(inches) : 14.26" x 9.85" x as thin as 0.67"

Weight

LCD : Starting at 1.98 kg (4.37 lbs)

WUXGA : Starting at 2.04 kg (4.49 lbs)

Hinge

360°

Colors

Storm Grey

Arctic Grey

¹ All battery life claims are approximate and based on two methods of testing: MobileMark® 2018 battery life benchmark @ 200 nits brightness and continuous 1080p video playback @ 150 nits brightness on the latest update of Windows 10. Actual battery life will vary and depends on many factors such as product configuration and usage, software use, wireless functionality, power management settings, and screen brightness. The maximum capacity of the battery will decrease with time and use.

² Height is calculated using T2 measurements and should be considered 'as thin as'.

³ Available in select regions.

⁴ The actual transfer speed of the USB 3.2 will vary and, depending on many factors, such as the processing capability of host and peripheral devices, file attributes and other factors related to system configuration and your operating environments, may be slower than a speed of 20 Gbit/s.

CONNECTIVITY

WLAN

Intel® WiFi 6E³ 2x2 802.11ax

Bluetooth®

Bluetooth® 5.1

Input/Output (I/O) Ports

2 x USB 3.2 Gen 1⁴ (One is Always On)

2 x Thunderbolt™ 4

(Data/DP 1.4/PD 3.0)

1 x HDMI 1.4b

1 x MicroSD Card Reader

(UHS-I(104) PCIe Gen 1)

1 x Audio Combo Jack

PRELOADED SOFTWARE

- Windows 11 Home/Pro
- Lenovo Vantage
- Microsoft Office 365 Trial
- McAfee® LiveSafe™
- Amazon Alexa³
- Dolby® Access (Dolby Vision® and Atmos®)

IN-BOX

Standard

Digital Pen or Precision Pen 2

Optional

Fingerprint Reader

NOTEABLE MENTIONS

- ENERGY STAR®
- EPEAT™ Gold Registered
- MIL-STD-810H
- TÜV Rheinland Eyesafe
- CO₂ Offset Service

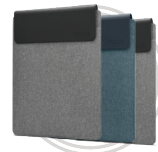
OPTIONS & ACCESSORIES



Lenovo Yoga
Mouse with Laser
Presenter



Lenovo Yoga Active
Noise Cancellation
Headphones



Lenovo
Yoga Sleeve

McAfee® LiveSafe™

Register McAfee® to enjoy these benefits in your FREE 30-day trial.

- Award-winning Antivirus
- Password Manager
- Safe Web Browsing
- Multi-device Compatibility
- Identity Theft Protection
- Free Customer Support

* Example of Lenovo catalogue naming convention



Intel® platform codes

Gemini Lake: IGM, Whiskey Lake: IWL, Icelake: IIL, Gemini Lake: IGL, Comet Lake: IML, Tiger Lake: ITL, Alder Lake: IAP, Alderlake-HX: IAX, AlderLake-U15: IAU, AlderLake-P28: IAP, AlderLake-P28/U15: IAL, AlderLake-H45: IAH, Alderlake N: IAN, Raptorlake-PX: IRP, Raptorlake-H: IRH, Raptorlake-HX: IRX, Alderlake-M U9: IAM, Raptorlake U: IRU, Meteorlake P: IMP, Raptorlake-P: IRP, Raptorlake-P28/U15: IRL.



Lenovo