

YOGA Slim 7i Carbon (13", 8)

Make Your Move.

Wander with purpose and power. The Yoga Slim 7i Carbon delivers no-compromise premium mobile experiences with Intel® Evo™, housing 13th Gen Intel® Core™ processors in a thin, lightweight, and military-grade durable design. Weighing less than 1 kg, the aerospace-grade magnesium alloy chassis is reinforced with multi-layer Carbon Web-Core 2.0 in a Comfort Edge design featuring an edge-to-edge keyboard and larger trackpad. Connect deeper with your vision and story with a 13" 2.5K 90Hz 16:10 PureSight display.

Why you should buy the Lenovo Yoga Slim 7i Carbon (13", 8)



No-compromise mobility

Stay at your peak power and potential even on the go and on the fly with a thin-and-light device that's designed with Intel® Evo™ to deliver a no-compromise, premium mobile experience. Push heavy-duty performance with 13th Gen Intel® Core™ processors, up to 16 GB LPDDR5 memory, and up to 1 TB PCIe SSD.



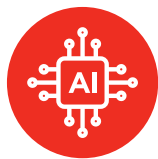
Incredible lightness. Rugged durability.

Untether yourself with the incredibly light Yoga Slim 7i Carbon cast with military-grade ruggedness to realize your aspirations as a nomadic digital creator. Wander far or just stay home with an impossibly thin yet solidly rugged MIL-STD 810H certified chassis made from aerospace-grade magnesium alloy reinforced with multi-layer Carbon Web-Core 2.0, all weighing less than 1 kg.



A moveable vision

See more of everything on a 13" 2.5K 90Hz PureSight display with a taller 16:10 aspect ratio and anti-glare screen. Connect deeper to your story and fuel your creative ambitions. Create with fully saturated hues on a fully color-accurate display sporting a hardware-calibrated Delta E<1 accurate 100% sRGB color space. Keep your eyes from strain even after a long session with TÜV Hardware Low Blue Light certification.



A smarter, more mobile way to create

Stay on the move and in the zone with a machine that's as intuitive as you are with the Yoga Slim 7i Carbon's AI Engine+, which anticipates what you need with Adaptive Performance, dynamically adjusting the system to optimize for power, thermals, or battery. Ward off root and ransomware attacks with Integrated Security foundational encryption and connect more clearly with noise-cancelling mics and an HD camera with e-privacy shutter. Stay unplugged for longer with an all-day battery and Rapid Charge Express.



YOGA Slim 7i Carbon (13", 8)

SPECIFICATIONS

Yoga Slim 7 Carbon 13IRP8*

PERFORMANCE

Processor

Intel® Core™ i7-1360P
Intel® Core™ i5-1340P

Operating System

Windows 11

Graphics

UMA : Intel® Iris® X*

Memory

LPDDR5 : 8 GB / 16 GB Dual Channel, 5200 MHz

Storage

PCIe Gen 4 M.2 : 512 GB / 1 TB

Camera & Microphone

HD Webcam
IR Camera
Camera Shutter
Dual Microphones

Audio

2 x 2W Harman Kardon® Speakers
Dolby Atmos® Audio

Battery¹ (50Whr)

MobileMark® 2018 : Up to 10 Hours

Local Video Playback : Up to 14.6 Hours

Rapid Charge Express : 15 min. / 3 Hours Usage

DESIGN

Display

13.3" 2.5K (2560 x 1600) IPS, 90Hz, 16:10,
400 nits, ΔE<1 (Average) Hardware-calibrated,
100% sRGB, Dolby Vision®, TÜV Low Blue Light
Certification, Matte, Touch

13.3" 2.5K (2560 x 1600) IPS, 90Hz, 16:10,
400 nits, ΔE<1 (Average) Hardware-calibrated,
100% sRGB, Dolby Vision®, TÜV Low Blue Light
Certification, Matte

Dimensions (W x D x H)

(mm) : 301 x 206 x as thin as 14.8
(inches) : 11.85" x 8.11" x as thin as 0.58"

Weight

Non-touch

Starting at 968 g (2.13 lbs)

Touch

Starting at 984 g (2.17 lbs)

Hinge

172°-178°

Colors

Moon White
Storm Grey



CONNECTIVITY

WLAN

WiFi 6E

Bluetooth²

Bluetooth® 5.1²

Input/Output (I/O) Ports

Left

1 x Thunderbolt™ 4.0 (PD 3.0 /
DP 1.4 / USB 4.0)

Right

1 x Type-C™ Full-Function (PD 3.0 /
DP 1.4 / USB 3.2 Gen 2³)

PRELOADED SOFTWARE

- Windows 11 Home/Pro
- Lenovo Vantage
- Microsoft 365 Trial
- McAfee® LiveSafe™
- Amazon Alexa
- Dolby® Access (Dolby Vision® and Atmos®)

NOTABLE MENTIONS

- ENERGY STAR®
- EPEAT™ Gold
- MIL-STD 810H Certified

¹ All battery life claims are approximate and based on two methods of testing: MobileMark® 2018 battery life benchmark and continuous 1080p video playback on the latest update of Windows 10 (with 150 nits brightness and default volume level). Actual battery life will vary and depends on many factors such as product configuration and usage, software use, wireless functionality, power management settings, and screen brightness. The maximum capacity of the battery will decrease with time and use.

² Bluetooth® version depends on OS.

³ The actual transfer speed of the USB 3.2 will vary and, depending on many factors, such as the processing capability of host and peripheral devices, file attributes and other factors related to system configuration and your operating environments, will be slower than a speed of 20 Gbit/s.

With Lenovo
AI Engine+

LENOVO SERVICES

Lenovo Premium Care Plus

Lenovo Premium Care Plus is the ultimate PC support experience with you as our priority 24/7. Enjoy personalized hardware and software support from a global network of elite technicians, along with accidental damage protection, fast repairs with onsite support, extended battery warranty, data migration assistance, and smart performance solutions that optimize PC performance and security.

Lenovo Smart Performance

Smart Performance Services within Lenovo Vantage will keep your system running at optimum performance and proactively fix issues that affect PC performance, internet performance, remove malware, and improve device security.

Lenovo Accidental Damage Protection

Avoid the hassles of unexpected damage & repair costs. With coverage for drops, spills, electric surges, and broken LCD screens, accidental damage protection makes it easy to repair to your PCs and ensures your device is up and running fast.

Lenovo CO₂ Offset Services

Offset the carbon emissions of your PC with Lenovo CO₂ Offset Services – an easy and transparent solution to offset emissions across the average lifecycle of your device. These offsets are invested in UN-approved initiatives like renewable energy or ecological projects, thus contributing towards a more sustainable future.

Lenovo Sealed Battery Warranty

Long-lasting battery life is not just a feature but a necessity to help you stay productive and connected all day long. Protect your PC's sealed battery from degradation, enjoy hassle-free battery replacement service, and safeguard your PC from future battery failure with our Sealed Battery Warranty Service.

Lenovo Warranty Extensions (Up to 3 Years Duration)

Gain complete peace of mind by extending your base warranty to up to 3 years and minimize unexpected repair costs.

OPTIONS & ACCESSORIES



Lenovo Yoga
Mouse with Laser
Presenter



Lenovo Yoga Active
Noise Cancellation
Headphones



Lenovo
Yoga Sleeve

McAfee® LiveSafe™

Register McAfee® to enjoy these benefits in your FREE 30-day trial.

- Award-winning Antivirus
- Password Manager
- Safe Web Browsing
- Multi-device Compatibility
- Identity Theft Protection
- Free Customer Support

* Example of Lenovo
catalogue naming
convention

Yoga	Slim	7	Carbon	13	I	R	P	8
Sub-brand	Form Factor	Positioning	Series	Screen Size	Platform Code	Generation		

Intel® platform codes

Gemini Lake: IGM, Whiskey Lake: IWL, Icelake: IIL, Gemini Lake: IGL, Comet Lake: IML, Tiger Lake: ITL, Alder Lake: IAP, Alderlake-HX: IAX, Alderlake-U15: IAU, Alderlake-P28: IAP, Alderlake-P28/U15: IAL, Alderlake-H45: IAH, Alderlake N: IAN, Raptorlake-PX: IRP, Raptorlake-H: IRH, Raptorlake-HX: IRX, Alderlake-M U9: IAM, Raptorlake U: IRU, Meteorlake P: IMP, Raptorlake-P: IRP, Raptorlake-P28/U15: IRL.

WWW.LENOVO.COM

Lenovo reserves the right to alter product offerings and specifications at any time, without notice. Lenovo makes every effort to ensure accuracy of all information but is not liable or responsible for any editorial, photographic or typographic errors. All images are for illustration purposes only. For full Lenovo product, service and warranty specifications visit www.lenovo.com. Lenovo makes no representations or warranties regarding third party products or services. **Trademarks:** The following are trademarks or registered trademarks of Lenovo: Lenovo, the Lenovo logo, ideapad, IdeaCentre, yoga and yoga home. Microsoft, Windows and Vista are registered trademarks of Microsoft Corporation. Qualcomm Snapdragon is a product of Qualcomm Technologies, Inc. and/or its subsidiaries. Qualcomm and Snapdragon are trademarks of Qualcomm Incorporated, registered in the United States and other countries. Google, Chrome, and Chromebook are trademarks of Google LLC. Netflix is a registered trademark of Netflix, Inc. Other company, product and service names may be trademarks or service marks of others. Visit www.lenovo.com/lenovo/us/en/safecomp/ periodically for the latest information on safe and effective computing. ©2022 Lenovo. All rights reserved.



Lenovo