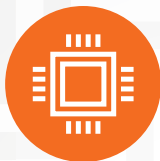


YOGA Slim 7 Pro (16", 7)

Power to the pixel.

Unleash pure, uncompromising power with the Lenovo Yoga Slim 7 Pro. This ultra-compact, ultra-thin laptop features a 165Hz touchscreen, the advanced architecture of AMD Ryzen™ 6000HS Creator Edition processors and leading NVIDIA® GeForce RTX™ 3050 graphics. The QHD 16:10 display sports 100% sRGB color accuracy and ultra-thin bezels on a huge 16" screen, so you can get some added work space.

WHY YOU SHOULD BUY THE LENOVO YOGA SLIM 7 PRO (16", 7)



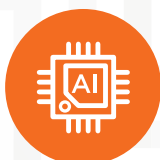
Infinite possibilities. Incredible battery life.

They say life is full of compromises. They say that a high-performance laptop has to be big and bulky. The AMD Ryzen™ 6000HS Creator Edition processors bring new experiences to life, with up to 8 Cores in a 80W TDP powerhouse, and up to 32 GB LPDDR5 RAM, and up to 1 TB SSD PCIe Gen4 storage, delivering everything you need, and so much more on a premium laptop with amazing battery life. Never compromise on your laptop again.



Visuals from a higher realm

Designed for endless creativity, the crystal-clear QHD IPS touchscreen display runs seamless visuals with ultra-smooth action via a rapid 165Hz refresh rate. Unlock endless productivity with the 16:10 increased usable screen size, through true-to-life 100% sRGB color accuracy. Work, game, and entertain anywhere on the up-to-500-nits bright display.



An AI-optimized user experience

Your Yoga's now a much smarter PC with AI Engine+: more secure, fluid and fast, and crucially, more intuitive. It knows what you need before you do and responds in real time. Adaptive Performance speeds up performance or lengthens battery life, and acoustics and stabilizes connections. Intelligent Sense gives you immediate secure access, sharpens up resolutions and visuals, takes voice and gesture commands, minimizes ambient noise, and more. Integrated Security keeps your device more secure and protected than ever before.



Near-edgeless display

Make out every sub-pixel of the Yoga Slim 7 Pro's phenomenal 16" 16:10 display. Framed by razor-edge borders and only 3.9 mm bezels at the top and sides, the display lets you immerse yourself in a near-edgeless experience.



WWW.LENOVO.COM

Lenovo

YOGA Slim 7 Pro (16", 7)

SPECIFICATIONS

Yoga Slim 7 Pro 16ARH7*

PERFORMANCE

Processor

AMD Ryzen™ 7 6800HS Creator Edition
AMD Ryzen™ 5 6600HS Creator Edition

Operating System

Windows 11

Graphics

DIS : NVIDIA® GeForce RTX™ 3050
UMA : Integrated Radeon™ Graphics

Memory

LPDDR5 : 16 GB, 6400 MHz, Dual Channel

Storage

SSD PCIe Gen4 M.2 2280 : 512 GB / 1 TB

Camera & Microphone

FHD Webcam
IR Camera
Dual Microphones

Audio

2 x 2W Speakers
Dolby Atmos® Audio

Battery¹ (75Whr)

MobileMark® 2018 : Up to 15 Hours

Local Video Playback : Up to 20.8 Hours

Rapid Charge Boost : 15 min. / 2 Hours Usage²

DESIGN

Display

16" 2.5K (2560 x 1600) Touch IPS, 500 nits,
100% sRGB, 165Hz, 16:10, Dolby Vision®,
TÜV Low Blue Light Certification

Dimensions (W x D x H)

(mm) : 356.81 x 247.42 x as thin as 17.4
(inches) : 14.05" x 9.74" x as thin as 0.69"

Weight

Starting at 2.08 kg (4.59 lbs)

Hinge

150°

Color

Storm Grey

¹ All battery life claims are approximate and based on two methods of testing: MobileMark® 2018 battery life benchmark and continuous 1080p video playback on the latest update of Windows 10 (with 150 nits brightness and default volume level). Actual battery life will vary and depends on many factors such as product configuration and usage, software use, wireless functionality, power management settings, and screen brightness. The maximum capacity of the battery will decrease with time and use.

² Local video playback @ FHD 150 nits.

³ The actual transfer speed of the USB 3.2 will vary and, depending on many factors, such as the processing capability of host and peripheral devices, file attributes and other factors related to system configuration and your operating environments, will be slower than a speed of 20 Gbit/s.

⁴ Available in select regions.

CONNECTIVITY

WLAN

2x2 WiFi 802.11ax

Bluetooth®

Bluetooth® 5.1

Input/Output (I/O) Ports

AMD + UMA

2 x USB-A 3.2 Gen 1³
1 x SD Card
1 x HDMI™ 2.0
1 x USB 3.2³ Type-C™
1 x Type-C™ (PD + USB 2.0)
1 x Audio Jack

AMD + RTX

2 x USB-A 3.2 Gen 1³
1 x SD Card
1 x HDMI™ 2.0
1 x USB 3.2³ Type-C™
1 x Square DC-In
1 x Audio Jack

PRELOADED SOFTWARE

- Windows 11 Home/Pro
- Lenovo Vantage
- Microsoft Office 2021
- McAfee® LiveSafe™
- Amazon Alexa⁴
- Dolby® Access (Dolby Vision® and Atmos®)

With Lenovo
AI Engine+



LENOVO SERVICES

Lenovo Premium Care Plus

The ultimate PC support experience, with you as our 24/7 priority. Enjoy personalized hardware and software support from a global network of elite technicians, along with extensive solutions that protect your PC from accidental damage, battery degradation, and ensures optimized PC performance and security.

Lenovo Smart Performance

Smart Performance Services within Lenovo Vantage will keep your system running at optimum performance and proactively fix issues that affect PC performance, internet performance, remove malware, and improve device security.

Lenovo Accidental Damage Protection

Avoid the hassles of unexpected damage & repair costs. With coverage for drops, spills, electric surges, and broken LCD screens, accidental damage protection makes it easy to repair to your PCs and ensures your device is up and running fast.

Lenovo Smart Privacy Services

Smart Privacy Services within Lenovo Vantage puts you in control of your privacy with an intelligent software that makes your browsing experience more private by blocking third-party web trackers, secures your online accounts, encrypts your WiFi connection, monitors your information for exposure in organizational data breaches, and removes your profile data from select sites found on the internet.

Lenovo Sealed Battery Warranty

Long-lasting battery life is not just a feature but a necessity to help you stay productive and connected all day long. Protect your PC's sealed battery from degradation, enjoy hassle-free battery replacement service, and safeguard your PC from future battery failure with our Sealed Battery Warranty Service.

Lenovo Warranty Extensions (Up to 3 Years Duration)

Gain complete peace of mind by extending your base warranty to up to 3 years and minimize unexpected repair costs.

OPTIONS & ACCESSORIES



Lenovo Yoga Mouse with Laser Presenter



Lenovo 510 FHD Webcam



Lenovo Urban Sleeve Case

McAfee® LiveSafe™

Register McAfee® to enjoy these benefits in your FREE 30-day trial.

- Award-winning Antivirus
- Password Manager
- Safe Web Browsing
- Multi-device Compatibility
- Identity Theft Protection
- Free Customer Support

*Example of Lenovo marketing naming convention

Yoga	Slim	7	Pro	16	A	R	H	7
Sub-brand	Form Factor	Position		Screen size or volume (litre)	Platform	Generation		

AMD platform codes

Bristol Ridge-L: ABL, Beema: ABM, Bristol Ridge: ABR, Carizzo-L: ACL, Carizzo: ACZ, Godavari: AGR, Kaveri: AKV, Stoney Ridge: ASR, Stoney Ridge: AST (NB), Summit Ridge: ASU, Raven Ridge: ARR, Picasso: API, Ryzen: ARE, Dali: ADA, Matisse: ARH, Cezanne H: ACH, Rembrandt U: ARB.

LENOVO CO₂ OFFSET SERVICES

Now give back to the environment in a tangible way! Lenovo CO₂ Offset Service gives you a simple and transparent way to offset carbon emissions and help the environment by supporting one of several United Nations Climate Action projects, including those that help to improve renewable energy, reduce air pollution, or enhance safe waste disposal, all of this at just the click of a button.

WWW.LENOVO.COM



Lenovo reserves the right to alter product offerings and specifications at any time, without notice. Lenovo makes every effort to ensure accuracy of all information but is not liable or responsible for any editorial, photographic or typographic errors. All images are for illustration purposes only. For full Lenovo product, service and warranty specifications visit www.lenovo.com. Lenovo makes no representations or warranties regarding third party products or services. ©2020 Advanced Micro Devices, Inc. All rights reserved. AMD, the AMD Arrow logo, Athlon, Radeon and combinations thereof, are trademarks of Advanced Micro Devices, Inc. Microsoft and Windows are registered trademarks of Microsoft Corporation in the United States and/or other countries. 3DMark is a registered trademark of Futuremark Corporation. Other names are for informational purposes only and may be trademarks of their respective owners. Other company, product and service names may be trademarks or service marks of others. Visit www.lenovo.com/lenovo/us/en/safecomp/ periodically for the latest information on safe and effective computing. ©2022 Lenovo. All rights reserved.

Lenovo