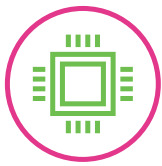


# ideapad L3i (15")

## EVERYDAY VERSATILITY WITH PROFESSIONAL POWER.

The new Lenovo™ **IdeaPad™** L3i brings everything you need in an everyday-use laptop, but offers powerful memory and Intel® processing options, making it perfect for anyone who wants to do more than just surf the internet. Enjoy its FHD display and stereo speakers with your favorite streaming movies and shows and take it anywhere with a battery that lasts all day. Work, school, or home, the **IdeaPad** L3i has something for everyone.

### WHY YOU SHOULD BUY THE LENOVO IDEAPAD L3i (15")



#### Not your grandmother's laptop

This isn't the everyday-use laptop that's only good for checking emails and typing up essays. Powered by up to 11<sup>th</sup> Generation Intel® Core™ i7 processor, **IdeaPad** L3i delivers the performance and responsiveness you need to work, gaming and stream efficiently with less waiting.



#### Get lost in the experience

Take advantage of the **IdeaPad** L3i's Dolby Audio™ speaker system and narrow-bezel FHD display, built to bring your favorite videos to life with vivid colors and three-dimensional sound.



#### Privacy is key

The **IdeaPad** L3i features a crystal-clear HD webcam for all your video conferencing needs, but that doesn't mean you want hackers looking at your home through it. The physical privacy shutter makes it impossible for a webcam hack to gain a window into your personal life.



#### Stop searching for an open socket

With all-day battery life, the **IdeaPad** L3i can go anywhere and perform. And if you need a quick boost, rapid charge technology gets your battery from 0 to 80% in under an hour so you can get back to getting everything you need accomplished.



Lenovo™



[WWW.LENOVO.COM](http://WWW.LENOVO.COM)



# ideapad L3i (15")

## SPECIFICATIONS

Lenovo IdeaPad L3 15ITL6\*

### PERFORMANCE

#### Processor

11<sup>th</sup> Generation Intel® Core™ i7-1165G7  
11<sup>th</sup> Generation Intel® Core™ i5-1135G7  
11<sup>th</sup> Generation Intel® Core™ i3-1115G4  
Intel® Pentium® 7505  
Intel® Celeron® 6305

#### Operating System

Windows 10 Pro  
Windows 10 Home  
Windows 10 S

#### Graphics

UMA : Integrated with Intel® Iris® Xe Graphics  
or Intel UHD Graphics

#### Memory

DDR4 : Up to 12 GB

#### Storage

PCIe SSD : 128 GB / 256 GB / 512 GB / 1 TB  
HDD : 500 GB / 1 TB / 2 TB

#### Camera

0.3M 720p Single Microphone Camera

#### Audio

2 x 1.5W Speakers with Dolby Audio™ (DAX3)

#### Battery

MobileMark® 201, : Up to 6.5 Hours  
1080p Video Playback : Up to 9.5 Hours  
Supports Rapid Charge

### DESIGN

#### Display

15.6" FHD (1920 x 1080) IPS, Anti-Glare,  
250 nits, 45% NTSC

15.6" FHD (1920 x 1080) TN, Anti-Glare,  
220 nits, 45% NTSC

15.6" HD (1366 x 768) TN, Anti-Glare,  
220 nits, 45% NTSC

#### Dimension (W x D x H)

(mm) : 363 x 254.6 x 22.9  
(inches) : 14.29" x 10.02" x 0.9"

#### Weight

Starting at 2.2 kg (4.8 lbs)

#### Colors

Platinum Grey  
Blizzard White

#### Wow Features

Privacy Shutter

### CONNECTIVITY

#### WLAN

Up to Wi-Fi 5 (2x2 802.11 ac)

#### Bluetooth®

Bluetooth® 5.0

#### Input/Output (I/O) Ports

1 x USB 3.1 Gen 1<sup>2</sup> (Type-C)  
2 x USB 3.1 Gen 1<sup>2</sup> (Type-A)  
1 x HDMI™  
1 x RJ45  
1 x Microphone/Earphone Combo  
1 x Power DC Jack

### PRELOADED SOFTWARE

- Lenovo Antivirus Plus
- Lenovo PC Manager
- Lenovo Utility
- Lenovo Vantage
- LinkedIn
- McAfee LiveSafe™
- Microsoft Office

<sup>1</sup> All battery life claims are approximate and based on two methods of testing: MobileMark® 2014 battery life benchmark and continuous 1080p video playback on the latest update of Windows 10 (with 150 nits brightness and default volume level). Actual battery life will vary and depends on many factors such as product configuration and usage, software use, wireless functionality, power management settings, and screen brightness. The maximum capacity of the battery will decrease with time and use.

<sup>2</sup> The actual transfer speed of the USB 3.1 Gen 1 will vary and, depending on many factors, such as the processing capability of host and peripheral devices, file attributes and other factors related to system configuration and your operating environments, will be slower than a speed of 5 Gbit/s.



## LENOVO SERVICES

#### Warranty Upgrades - On-site / In-Home Service

Maximizes PC uptime and productivity by providing convenient, fast repair services in your own home.

#### Accidental Damage Protection

Avoid the hassles of unexpected repair costs. Provides coverage for non-warranted damage incurred under normal operating conditions, such as minor spills, drops or damage to the integrated screen.

#### Warranty Extensions (1-to-3 Years Total Duration)

This fixed-term, fixed-cost service helps accurately budget for PC expenses, protect your valuable investment and potentially lower the cost of ownership over time.

## OPTIONS & ACCESSORIES



Lenovo 15.6"  
Laptop Casual  
Backpack B210



Lenovo 400  
Wireless Mouse



Lenovo 100 In-Ear  
Headphone

\* Example of Lenovo catalogue naming convention

ideaPad	L3	15ITL6
Sub-brand	Position	Screen size or volume (litre) Platform (e.g. IAP = Apollo Lake)

#### Intel® platform codes

Haswell H81: IHH, Broadwell U: IBU, Skylake Z170: ISZ, Skylake B150: ISB, Kabylake: IKL, Skylake H110/H170: ISH, Skylake U: ISU, Apollo Lake: IAP, Coffee Lake B360: ICB, Coffee Lake H Refresh: IRH, Coffee Lake Z370 Overclock: ICO, Comet Lake: IML, Tiger Lake: ITL.



WWW.LENOVO.COM

Lenovo reserves the right to alter product offerings and specifications at any time, without notice. Lenovo makes every effort to ensure accuracy of all information but is not liable or responsible for any editorial, photographic or typographic errors. All images are for illustration purposes only. For full Lenovo product, service and warranty specifications visit [www.lenovo.com](http://www.lenovo.com). Lenovo makes no representations or warranties regarding third party products or services. **Trademarks:** The following are trademarks or registered trademarks of Lenovo: Lenovo, the Lenovo logo, ideapad, IdeaCentre, yoga and yoga home. Microsoft, Windows and Vista are registered trademarks of Microsoft Corporation. Ultrabook, Celeron, Celeron Inside, Core Inside, Intel, Intel Atom, Intel Atom Inside, Intel Core, Intel Inside, Intel Inside Logo, Intel vPro, Itanium, Itanium Inside, Pentium, Pentium Inside, vPro Inside, Xeon, Xeon Phi, and Xeon Inside are trademarks of Intel Corporation in the U.S. and/or other countries. Other company, product and service names may be trademarks or service marks of others. Visit [www.lenovo.com/lenovo/us/en/safecomp/](http://www.lenovo.com/lenovo/us/en/safecomp/) periodically for the latest information on safe and effective computing. ©2020 Lenovo. All rights reserved.



Lenovo™